



**CANOPY**  
Children's Solutions

ANNUAL REPORT

**2020**

# CONTENTS

3	HEROIC RESILIENCE
4	A FAMILY LEGACY STAMPED IN TRANSFORMATION
6	HEROIC OUTCOMES
8	BEHAVIORAL HEALTH SOLUTIONS
10	EDUCATIONAL SOLUTIONS
12	SOCIAL SERVICE SOLUTIONS
14	FINANCIALS
15	2020-2021 BOARD OF DIRECTORS
16	A HEROIC CHARGE TOWARD EQUITY AND INCLUSION
18	EVENTS
20	2020 TRANSFORMATIONAL PARTNERS
21	2020 DONORS
26	2020 VOLUNTEERS
27	LOOKING FOWARD, LEANING IN



*Canopy Children's Solutions' (Canopy) mission is to help children thrive and families overcome extraordinary challenges by providing a continuum of behavioral health, educational, and social service solutions.*

# HEROIC RESILIENCE

**DANDELIONS ARE NATURALLY RESILIENT.** They can thrive regardless of their environment. Orchids, on the other hand, require a very specific environment to thrive. However, if given the right amount of water and sunlight, you will see a breathtaking outcome. When it comes to resilience, some people are naturally born like dandelions, others like orchids.

Decades of research has taught us resiliency can be learned. So, if someone is naturally born an orchid, they can learn the resiliency skills of a dandelion and thrive despite the environmental conditions surrounding them. We see these thriving mission moments every day with the children and families we are honored to serve.

The ability to learn resilience is not only true for people, but also organizations. Over the last decade, Canopy has learned the resiliency skills necessary to shift from being a good company to being a great company. These disciplines have uniquely prepared us to thrive during 2020. In the face of multi-layered crises in the environment, Canopy achieved historical outcomes for our children and families!

**BEFORE POINTING TO A FEW OUTCOMES, LET'S HIGHLIGHT SOME OF THE INPUTS THAT CREATED THE CONTEXT FOR THE OUTPUTS TO OCCUR:**

**DISCIPLINE PRACTICES OF ORGANIZATIONAL HEALTH** (*trust, conflict, commitment, accountability, and results*) **AND ORGANIZATIONAL SMARTS** (*disciplined people, disciplined thought, and disciplined practices*) **THAT WILL BUILD A GREAT ORGANIZATION FOR THE NEXT 100 YEARS**

**LASER-FOCUSED THEMATIC GOAL OF KEEPING OUR CANOPY FAMILY SAFE** (*physically, psychologically, and financially*) **AND THRIVING** (*organizationally smart and healthy, high employee engagement, and empirical creativity*)

**LEADING DIVERSITY, EQUITY, AND INCLUSION (DE&I) CONVERSATIONS THROUGH A CROSS-SECTION OF ENGAGEMENT STRATEGIES** (*CEO/Board President conversations, culture sensitivity training, small group discussions, town hall meetings, CEO lunches, and creating a space for people to be vulnerable to share their stories*)

**RELENTLESS FOCUS ON METRICS THAT MATTER** (*customer feedback, quality data reporting, and IT systems*)

**PRACTICING INNOVATIVE CREATIVITY THAT PROTECTS OUR CORE SOLUTIONS WHILE STIMULATING PROGRESS** (*Microsoft digital transformation and new clinical models*)

**WHILE THE REPORT THAT FOLLOWS SPEAKS FOR ITSELF, LET US POINT YOU TO SEVERAL METRICS THAT DEMONSTRATE EXTRAORDINARY OUTCOMES IN THIS MOST EXTRAORDINARY YEAR:**

- Served 17% more children and families in 2020 than in 2019
- 2,359 children worked through their mental health challenges with a licensed therapist within our behavioral health clinics using face-to-face and telehealth solutions
- 97% of children at time of discharge from Canopy's in-CIRCLE (in-CIRCLE) safely remained in their home
- 100% of Canopy's CARES Schools (CARES Schools) students virtually attended school during COVID-19 in the spring of 2020

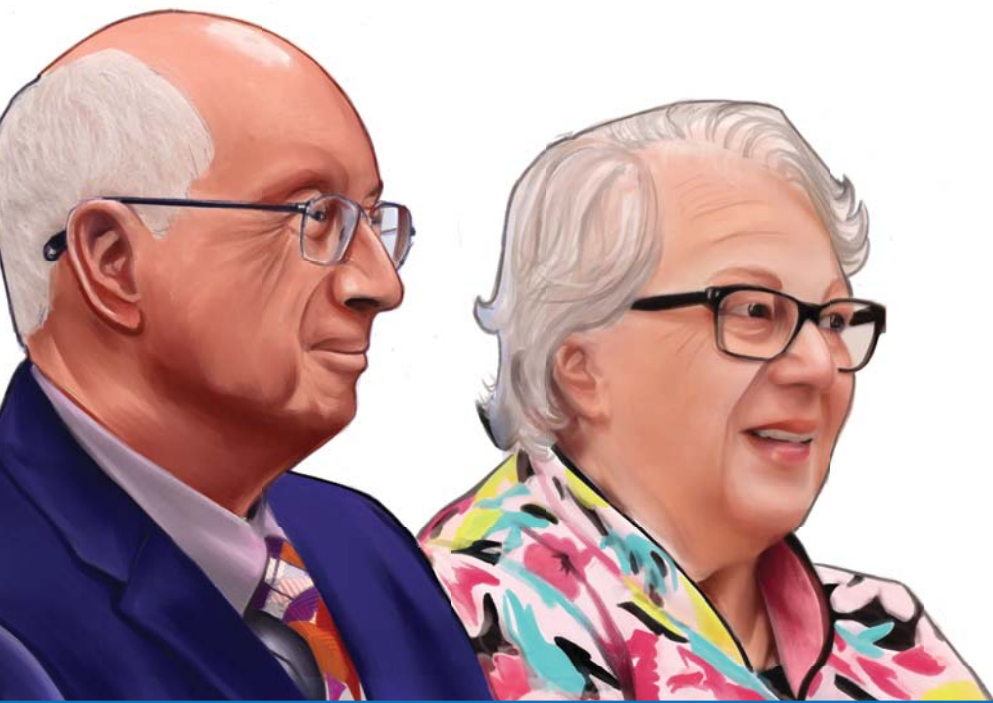
Transformational partners empowered the super heroes within Canopy to create an environment for every child to thrive (*whether naturally born a dandelion or an orchid*). Like the caterpillar that emerges into a beautiful butterfly that our logo represents, underneath the surface of every child's struggle, there is a super hero ready to emerge triumphant. The canopy covering children across Mississippi is thriving and so are the emerging super heroes we are so privileged to serve – thank you!



John D. Damon, Ph.D.  
Chief Executive Officer



Dorian Turner  
Board President



## ***A FAMILY LEGACY STAMPED IN TRANSFORMATION***

Richard C. (Rick) Bradley III's history with Canopy Children's Solutions is rooted in family, including his grandparents (Bret Beale Bradley, Sr. and Martha Elizabeth Littleton Bradley) and his mother (Mary Elizabeth Bradley). Rick learned the importance of advocacy from his grandparents' legacy. In the mid-1920's, their passion for others led them to establish, with construction funding from the Rosenwald Foundation, a publicly supported school for Black children in an underserved community in Marion County. The public support took the form of a voluntary tax on the Bradley property and that of their neighbors who consented to support the school. Inspired by that same passion, Mary Elizabeth Bradley, Rick's mother, became involved in 1955 when she joined the board of the Florence Crittenden Maternity Home in Jackson which operated under the program umbrella of the Mississippi Children's Home Society (now known as Canopy). Later, she served on the MCHS Board for many years and, together with Martha Stennis, led the revolution that installed professional leadership at MCHS. As a young man, Rick observed his mother in service as she found joy in organizing outings for unwed mothers at the Crittenden Maternity Home and hosting an annual Christmas party at the Bradley residence for the Crittenden residents. He recalls occasions when his parents financially assisted MCHS when payroll was difficult to meet. Growing up with service-minded role models shaped Rick's own personal view that prioritizing the needs of others is just something one does. Rick, a graduate of the Yale Law School, followed his father's professional path into the practice of law. Rick was a practicing attorney in Jackson in 1981 when his mother encouraged him to join the Board.

---

**“I RECALL GETTING READY TO LEAVE MY PARENTS’ HOUSE AFTER DINNER ONE EVENING. I REMEMBER EXACTLY WHERE I WAS, HAVING JUST WALKED OUT OF THE KITCHEN AND INTO THE UTILITY ROOM, WHEN MOTHER STOPPED ME BY SAYING, ‘RICHARD, I THINK IT IS TIME FOR YOU TO JOIN THE CHILDREN’S HOME BOARD,’ TO WHICH I REPLIED, ‘WHY? I’M A BACHELOR!’”**

He laughs at the thought now, but the reality is, Rick Bradley began his service to the organization in 1981 and has continuously served since that time. During his 40-year tenure, Rick has served three times as Board President. He played an integral role in key milestones for the organization including establishing Warren County Children’s Shelter and championing the Certificate of Need process for Psychiatric Residential Treatment Facility beds (CARES Center). Over the 109 years of service, Canopy has had seven CEOs, and Rick led the national search for the seventh and current CEO, Dr. John D. Damon.

Rick’s wife, Mimi, shares his passion, and together they have proudly witnessed the evolution and growth of Canopy as well as countless lives that have been transformed because of Canopy. When asked about his most memorable moment of witnessing that transformation, Rick recalled the time several board members were gathered on West Street in Jackson to erect a state historical marker about MCHS. He noted, “It was a cold and rainy Mississippi day, and there was a man in a black raincoat standing there, a man whom none of us knew. I made my way over to him to speak because everyone has a story, and I was interested in his. Boy, what a story he had to tell. One of the better stories I have ever heard about our organization. He had been adopted through the Children’s Home Society in the 1930s. His adoptive father had previously become great friends with William Faulkner whom he had met on a train to Canada where both were headed to join the Canadian military in WWI. His father taught Faulkner to fly and, ultimately, was the beneficiary of many of Faulkner’s papers. This adoptee was grateful he had been adopted and, like so many others, had a very rich life because of this organization.”

When asked what the Bradleys mean to Canopy, Dr. John Damon says, **“THE 109-YEAR CANOPY STORY IS A MISSISSIPPI TREASURE, AND OUR NARRATIVE IS INSEPARABLE FROM THE CONTRIBUTIONS OF THE BRADLEY FAMILY. FOR NEARLY 70 YEARS, THE BRADLEY FAMILY HAS BEEN INTEGRAL IN SHAPING THE VISION, SCOPE, STRATEGY, AND SUCCESS OF THE CANOPY STORY. RICK HAS BEEN AT THE NEXUS OF THE MOST SIGNIFICANT MILESTONES IN OUR HISTORY, AND HIS STALWART LEADERSHIP AND COMMITMENT TO INNOVATION HAS CONSISTENTLY ADVANCED OUR MISSION. HE HAS BEEN A TRUSTED CONFIDANT, WISE ADVISOR, COMPASSIONATE LISTENER, STRATEGIC VISIONARY, AND A DEAR FRIEND TO ME, HIS COLLEAGUES, AND MOST IMPORTANTLY TO THE CHILDREN WE ARE PRIVILEGED TO SERVE. I AM IMMEASURABLY GRATEFUL FOR ALL RICK AND MIMI HAVE DONE, ARE DOING AND WILL CONTINUE TO DO TO ADVANCE THIS GREAT MISSION TO TRANSFORM THE LIVES OF MISSISSIPPI’S CHILDREN.”**

Rick and Mimi Bradley have shared their time, talents, and treasures to advance Canopy’s mission. As the proverb states, “A society grows great when old men plant trees in whose shade they shall never sit.” Rick’s family tree is a shining example of generations that planted, watered, and nurtured the growth of the canopy under which we now sit. **THE BRADLEY LEGACY WILL CONTINUE TO GROW AND PROVIDE A SAFE PLACE FOR CHILDREN AND FAMILIES TO THRIVE. IF YOU ASK RICK TO SUM UP HIS SERVICE ON THE CANOPY BOARD, HE SAYS, “SERVING ON THE BOARD OF CANOPY CHILDREN’S SOLUTIONS IS THE BEST THING I HAVE EVER DONE IN MY LIFE.”**

---



# HEROIC OUTCOMES

**6,349** LIVES OF CHILDREN TRANSFORMED IN 2020

**17% INCREASE** IN CHILDREN SERVED FROM 2019 TO 2020

Canopy provides life-changing, upstream solutions for Mississippi children and families to reach their full potential and thrive. We believe every child can be a success story with a solid foundation for strong brain development, access to premium and individualized therapeutic healthcare, and support from healthy relationships on the journey. Positive mental wellness in children and families builds stronger communities, and a brighter future for all.

## THE CHILDREN WE SERVE

GENDER	MALE		FEMALE	
	53%		47%	
ETHNICITY	AFRICAN AMERICAN		CAUCASIAN	OTHER
	32%		47%	21%
AGE	0-5	6-12	13-19	OVER 20
	11%	41%	32%	16%

## CONCENTRATION OF SOLUTIONS

(CHILDREN SERVED)\*

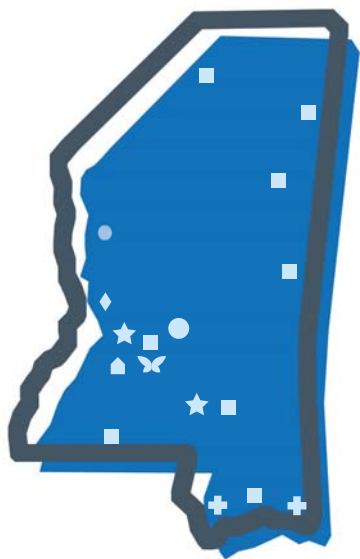
**3,091** BEHAVIORAL HEALTH SOLUTIONS

**352** EDUCATIONAL SOLUTIONS

**3,662** SOCIAL SERVICE SOLUTIONS

*\*Inclusive of children who received care through more than one solution.*

# SOME HEROES DON'T WEAR CAPES



## 17 STATEWIDE LOCATIONS

Including:

- 1 ADMINISTRATIVE OFFICE
- ★ 2 CARES SCHOOLS
- ✦ 1 CENTER OF EXCELLENCE
- ✚ 2 CHILD ADVOCACY CENTERS
- 9 COMMUNITY OFFICES
- ◆ 1 EMERGENCY SHELTER
- ▲ 1 RESIDENTIAL FACILITY

## PROFESSIONAL CERTIFICATIONS

Canopy employees hold over 200 professional licenses and certifications. Below are highlighted certifications and licenses along with the number of Canopy professionals holding the designations.

- 26 LICENSED SOCIAL WORKERS
- 19 LICENSED PROFESSIONAL COUNSELORS
- 75 COMMUNITY MENTAL HEALTH THERAPISTS
- 19 TEACHERS
- 18 REGISTERED NURSES
- 6 NURSE PRACTITIONERS
- 1 DOCTORAL LEVEL BOARD CERTIFIED BEHAVIOR ANALYST
- 5 BOARD CERTIFIED BEHAVIOR ANALYSTS
- 4 DOCTORS OF PHILOSOPHY
- 1 PSYCHOLOGIST

## EXPERTS IN CHILDREN'S MENTAL HEALTH LICENSED, CERTIFIED, AND ACCREDITED

BETTER BUSINESS BUREAU (BBB) WISE GIVING ALLIANCE  
GUIDESTAR PLATINUM SEAL OF TRANSPARENCY  
THE JOINT COMMISSION  
MISSISSIPPI DEPARTMENT OF CHILD PROTECTION SERVICES

MISSISSIPPI DEPARTMENT OF EDUCATION  
MISSISSIPPI DEPARTMENT OF HEALTH  
MISSISSIPPI DEPARTMENT OF MENTAL HEALTH



# BEHAVIORAL HEALTH SOLUTIONS

THROUGH CANOPY'S BEHAVIORAL HEALTH SOLUTIONS, CHILDREN ARE ABLE TO FIND THE HELP THEY NEED TO THRIVE IN THEIR HOMES AND COMMUNITIES. CANOPY PROVIDES SOLUTIONS FOR A WIDE VARIETY OF CHILDHOOD BEHAVIORAL ISSUES THROUGH A CONTINUUM OF CARE.

- **CANOPY BEHAVIORAL HEALTH CLINICS** offer a wide range of solutions for children and families including behavioral health evaluations, individual and family therapy, crisis management, medication management, and psychiatric services.  
*Gulfport, Hattiesburg, Jackson*
- **CANOPY'S CARES CENTER** is a psychiatric residential treatment center for children and adolescents ages 6 to 17 years old with severe emotional and/or behavioral challenges.  
*Jackson*
- **CANOPY'S EARLY INTERVENTION AUTISM CLINIC** provides early intervention autism therapy for children ages 18 months to 8 years old.  
*Jackson*
- **CANOPY'S MISSISSIPPI YOUTH PROGRAMS AROUND THE CLOCK (MYPAC)** is an intensive in-home and community-based solution that provides parents with an alternative treatment plan to psychiatric residential treatment services for youth with serious emotional challenges.  
*Statewide*

## CARENet

Canopy's CareNet is a system of integrated care allowing a child to move seamlessly from one solution to another while remaining under the Canopy. This solution was created to remove the barriers to accessing quality mental and behavioral healthcare at various levels of care.



## CANOPY'S CENTER OF EXCELLENCE

### CHILDREN ON THE AUTISM SPECTRUM

Despite the pandemic, many of Canopy's autism families leaning on the assistance and support of the autism solutions team have seen amazing progress in their children, including successful potty-training and first spoken words. There was even a child who read his mom a full-length book during a telehealth session who just two years ago had no spoken words.

Autism has been growing at an alarming rate, such that the Centers for Disease Control and Prevention (CDC) has labeled the explosion of autism as a public health crisis. Recently, the CDC reported an estimated 1 in 54 children are identified with autism – this represents a ten percent increase over previous estimates of autism prevalence from 2016.

Canopy has been working hard to solve the problem of providing comprehensive autism therapy for children on the autism spectrum through telehealth and in-person methods. Every day, Canopy is creating a pathway for children on the autism spectrum to gain access to education by removing the barriers to learning via Canopy's Early Intervention Autism clinic as well as creating individualized educational experiences for Canopy students at both CARES School locations.

# HEROIC OUTCOMES

**3,091**

CHILDREN  
SERVED THROUGH  
CANOPY'S BEHAVIORAL  
HEALTH SOLUTIONS

**2,359**

CHILDREN  
WORKED WITH  
LICENSED THERAPISTS  
AT THE BEHAVIORAL  
HEALTH CLINICS

**14,271**

HOURS OF APPLIED  
BEHAVIOR ANALYSIS  
EARLY-INTERVENTION THERAPY  
FOR CHILDREN ON THE  
AUTISM SPECTRUM

**672**

CHILDREN RECEIVED  
INTENSIVE PSYCHIATRIC  
TREATMENT, AND OF THOSE  
67% RECEIVED CARE IN  
THEIR OWN HOME

**MISSION  
MOMENT**

## A (SPORTS) STAR IS BORN

Kyle, a 16-year-old, came to Canopy's Mississippi Youth Programs Around the Clock (MYPAC) for challenges he was facing at school and in his community. While in MYPAC, Kyle learned how to control his anger, as well as ways to better communicate his feelings. After successfully exiting MYPAC, Kyle was featured in the local newspaper for receiving football and basketball awards.



# EDUCATIONAL SOLUTIONS

## CANOPY USES A MULTI-DISCIPLINARY, STRENGTHS-BASED APPROACH TO SUPPORT THE EMOTIONAL, BEHAVIORAL, AND EDUCATIONAL NEEDS OF EACH STUDENT.

- **CANOPY'S CARES SCHOOLS** are fully-accredited, private, non-public, special purpose schools designed to meet the educational and behavioral needs of children whose behavior prohibits them from succeeding in a traditional classroom setting.

CANOPY CARES SCHOOL HATTIESBURG | CANOPY CARES SCHOOL JACKSON

- **CARES SCHOOL AUTISM CLASSROOMS** provide children on the autism spectrum with small classroom sizes that deliver education and therapy in a single location.



### VIRTUAL SUCCESS LEADS TO A TRANSFORMED CHILD

When Aaron first enrolled in the upper elementary classes at CARES School Jackson, he had a history of extreme verbal and physical aggression. Aaron quickly began learning the skills he needed to manage his extreme emotions. There were times when the teachers thought he may have to be referred out for more intensive solutions but they kept working with Aaron because they believed he could succeed.

During the COVID-19 school closure, his teacher and therapist continued to work with him using virtual platforms and Aaron's guardian supervised his participation. When the other students chose to physically return to school, Aaron's guardian continued to participate remotely. His services continued on an individualized basis, and he participated in group and individual therapy virtually.

As soon as he returned to school in the fall, teachers and therapists noticed changes in Aaron's behavior. He began to think before he acted, he took pride in his daily behavior sheet, and he happily showed it to the other teachers when he had a good day. When he did respond impulsively or aggressively, Aaron was able to calm himself down quickly and discuss his choices with the staff and therapist. He began to actively seek help when he was upset. At the end of 2020, Aaron's teachers began discussions with his school district about his transition back to a traditional school setting. What a transformation he had made! Previously, Aaron was a child who expressed himself by destroying property and striking out aggressively. Now, he is communicating his feelings and needs and is thriving.

# HEROIC OUTCOMES

**352**

STUDENTS RECEIVED  
SPECIALIZED EDUCATION  
THROUGH CARES  
SCHOOLS

**34**

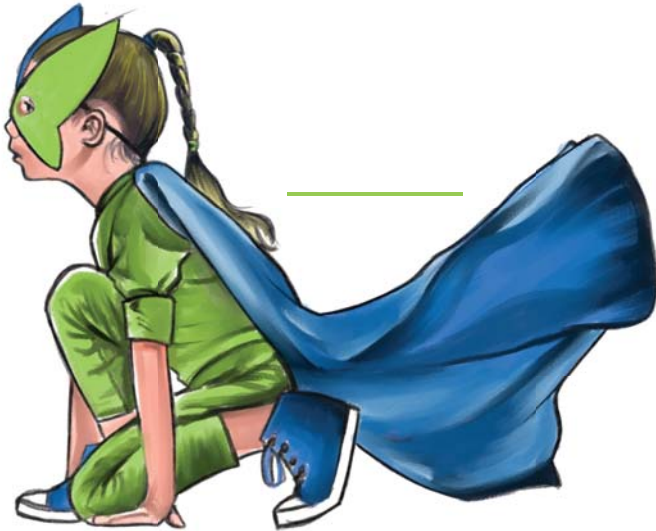
PUBLIC SCHOOL DISTRICTS  
WERE SERVED BY  
CARES SCHOOLS IN  
MISSISSIPPI

**100%**

OF CARES SCHOOL  
STUDENTS ATTENDED SCHOOL  
VIRTUALLY DURING COVID-19 IN  
THE SPRING OF 2020

**18%**

INCREASE IN DAY  
SCHOOL STUDENTS  
SERVED IN 2020  
COMPARED TO 2019



# SOCIAL SERVICE SOLUTIONS

CANOPY'S SOCIAL SERVICE SOLUTIONS ARE TAILORED TO THE INDIVIDUAL NEEDS OF THE CHILD AND FAMILY. FOR SOME CHILDREN, THIS MEANS PLACING THEM IN A NURTURING ENVIRONMENT THROUGH FOSTER CARE, ADOPTION, OR TEMPORARY RESIDENCE IN CANOPY'S EMERGENCY SHELTER, WHILE OTHERS ARE PROVIDED WITH THE TOOLS NEEDED TO THRIVE WITHIN THEIR CURRENT ENVIRONMENTS.

- **CANOPY'S IN-CIRCLE** is a comprehensive home and community-based family preservation, reunification, and support solution for children and families.

*Statewide*

- **CANOPY'S LINK** connects families to Family Navigators to identify potential stressors and to connect with resources as well as implement education on teen pregnancy prevention, substance abuse, parenting skills, and family stability. LINK provides support and training to help navigate families toward success. LINK is funded by a grant through the Mississippi Department of Human Services.

*Statewide*

- **CANOPY'S SOUTH MISSISSIPPI CHILD ADVOCACY CENTER (SMCAC)** provides forensic interviews and healing solutions for children involved in allegations of physical or sexual abuse, neglect, or who may have witnessed a violent crime.

*Gulfport, Pascagoula*

- **CANOPY'S THERAPEUTIC FOSTER CARE (TFC)** is home-based foster care for children with special emotional, behavioral, and medical needs.

*Hattiesburg*

- **CANOPY'S WARREN COUNTY CHILDREN'S SHELTER (WCCS)** is an emergency shelter with diagnostic/evaluation services for abused, neglected, runaway, and homeless children and youth.

*Vicksburg*



## FINDING A HOME IN THE STORM

Eight-year-old Wesley came to Canopy's Warren County Children's Shelter (WCCS) in the spring of 2020. His mother needed help getting back on her feet and could not properly care for him. While at WCCS, Wesley visited with his family and thrived emotionally. He was eager to live with his family again, but he also said he hoped to stay at WCCS if he could not live with his family. Fortunately, Wesley was able to reunite with his mother.

## HEROIC OUTCOMES

**83%**

OF CHILDREN  
SAFELY MAINTAINED  
OR REUNIFIED  
WITH THEIR FAMILIES

**97%**

SUCCESS RATE  
OF KEEPING FAMILIES  
PRESERVED AND  
SAFELY TOGETHER

**69**

ABUSED, NEGLECTED, RUNAWAY, AND  
HOMELESS CHILDREN AND YOUTH  
FOUND A SAFE SPACE AT CANOPY'S  
WARREN COUNTY CHILDREN'S SHELTER

**45% INCREASE**

CANOPY'S SOUTH MISSISSIPPI CHILD  
ADVOCACY CENTERS SERVED 394 MORE CHILDREN  
IN 2020 COMPARED TO 2019

**1,286**

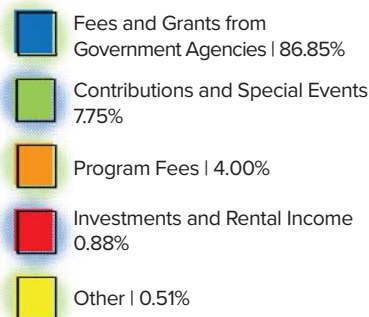
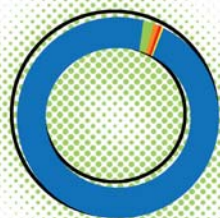
VICTIMS OF VIOLENT CRIMES FOUND  
COMFORT AND RESOURCES AT CANOPY'S SOUTH  
MISSISSIPPI CHILD ADVOCACY CENTERS

# FINANCIALS

2020 Consolidated Statement of Accounts\*

## REVENUE

\$29,643,555	FEES AND GRANTS FROM GOVERNMENT AGENCIES
\$1,365,902	PROGRAM FEES
\$2,646,343	CONTRIBUTIONS AND SPECIAL EVENTS
\$301,134	INVESTMENTS AND RENTAL INCOME
\$175,394	OTHER
<b>\$34,132,328</b>	<b>TOTAL SUPPORT AND REVENUE WITHOUT DONOR RESTRICTIONS</b>



\$1,128,528	CHANGES IN NET ASSETS WITHOUT DONOR RESTRICTIONS
\$133,533	CHANGES IN NET ASSETS WITH DONOR RESTRICTIONS
<b>\$1,262,061</b>	<b>TOTAL CHANGES IN NET ASSETS</b>
\$15,761,946	NET ASSETS AT THE BEGINNING OF THE YEAR
<b>\$17,024,007</b>	<b>NET ASSETS AT THE END OF THE YEAR</b>

## EXPENSES

\$16,342,635	SALARIES
\$3,224,435	PAYROLL TAXES AND BENEFITS
\$2,098,180	PROFESSIONAL FEES
\$709,728	PROGRAM SUPPLIES
\$610,837	OTHER OPERATING
\$705,161	TRAVEL AND AUTO EXPENSES
\$1,140,695	OCCUPANCY
\$93,391	EQUIPMENT RENTAL AND MAINTENANCE
\$368,716	INSURANCE
\$298,795	BAD DEBT EXPENSE
\$633,681	DEPRECIATION
\$2,322,631	GENERAL & ADMINISTRATIVE
<b>\$28,548,885</b>	<b>TOTAL PROGRAM SERVICE EXPENSES</b>
\$988,619	FUNDRAISING EXPENSES
\$2,296,613	ADMINISTRATIVE EXPENSES
\$1,169,683	PROPERTY EXPENSES
<b>\$33,003,800</b>	<b>TOTAL EXPENSES</b>



\*Year Ended December 31, 2020, excerpt from audit.

2020  
2021

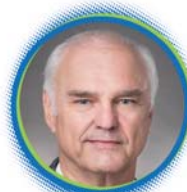
# BOARD OF DIRECTORS



Dorian Turner  
President



Lisa Bemis  
Vice President



Randy Eure  
Secretary



Andy Taggart  
Assistant Secretary



Brad Maley  
Treasurer



Larry Accardi  
Assistant Treasurer



Robert Abney



John Arledge



Lauren Benner



Richard C. Bradley III



Jamie Chustz



Helen Dalehite



Barney Daly



Dave Dennis



Joe Donaldson



Alfredo Donelson



Carol A. Edmonds



Larry Favreau



Gerard Gibert



Bill Grete



Monica Harrigill



Lynn Hosemann



Craig Jackson



Will Lampton



Robert Leard



Laurie McRee



Jackie Meck



LaToya Merritt



Jill Pierce



Charlotte Seals



Bryman Williams



Sherribeth Wright

## HONORARY MEMBERS

Arthur (Skipper) Jernigan, Jr.  
Auburn Lambeth  
James (Red) N. C. Moffat III  
David Sanders  
Jack Spradling  
Ben Stone  
Margo Swain

# A HEROIC CHARGE TOWARD EQUITY AND INCLUSION

## COMMITTED TO A CULTURE OF INCLUSION

Nearly a decade ago, Canopy made a commitment to create a very different work culture grounded in organizational health characterized by minimal confusion, minimal politics, high morale, high productivity, and low turnover. Based upon a genuine belief that the best way to achieve our mission is through a foundation of trusting relationships, Canopy's healthy culture harnesses our diversity and our commitment that every voice and every relationship matters. Although we have made great progress in creating this culture, we have a long way to go.

In many respects, 2020 was a consequential year accelerating our journey toward organizational health. With the onset of the Covid-19 pandemic, Canopy adopted the rally cry of keeping our Canopy family safe (both physically and psychologically) and thriving by focusing attention on protecting our employees and those we serve to ensure solutions continued. In fact, within two weeks of Mississippi entering a near complete shutdown, Canopy was still actively serving 90% of those in our care through telehealth solutions. The stress of the pandemic was only exacerbated by the injustices that continued to take place around the world, throughout our nation, and in our communities.

Too often the call to address racial inequity flares up only after tragic events. A series of high-profile murders coupled with the pandemic further punctuated just how much inequalities and unsurfaced deep generational trauma from decades of injustice, inequity, and discrimination that still exist in America.

Over the course of 2020, countless people throughout the country stood together in the face of inequality to be seen and heard. Canopy, too, moved forward through empathy and action toward radical healing through inclusive conversations within the Canopy family. This moment required accelerated change in decision-making, enhanced staff training, updated operating models and a fresh and renewed eye toward mission responsibility to Mississippi where confronting brutal facts requires courage, honest dialogue, and a resolute commitment from everyone to risk connection. Canopy remains unwavering in our commitment to lean into our differences as we confront injustice and inequality.

Rooted in our culture at Canopy is the idea every person matters and everyone's voice deserves to be heard. Canopy is a place that gives rise to hope and seeks to value diversity in all of its forms. As care providers and community partners, we bring a trauma-informed approach to the hard work of bias and reconciliation to provide much needed empathy and understanding on the long journey to lasting change.

## RECOGNIZING HEROES DURING A TIME OF CRISIS

Despite the unknowns and health risks of the pandemic, more than 100 essential frontline Canopy team members demonstrated their commitment to caring for more than 250 children and youth at our CARES Center and Warren County Children's Shelter by showing up in person every day to give care and deliver solutions. These hardworking heroes dedicated themselves to something bigger than themselves to keeping Canopy's children safe while doing the same for their immediate families.

Canopy's community programs, schools, and clinics continued to provide premium solutions through telehealth and virtual methods until they could transition back to in person formats so youth, children, and families could still receive services throughout the pandemic. This ability to change quickly is difficult for people in the best of times, but rapid changes required a great deal of fortitude, grace, and patience and the Canopy team stepped up to the task.



# EMPLOYEE DEMOGRAPHICS

461  
EMPLOYEES

## GENDER

FEMALE  
82%

MALE  
18%

## ETHNICITY

AFRICAN AMERICA  
64%

CAUCASIAN  
33%

OTHER  
3%

### ***CANOPY'S CORE VALUES***

The **VOICE** of our children and families always comes first.

**RELATIONSHIPS** matter and our differences make us stronger.

We take great **JOY** in service to others.

Our families and our communities deserve our **VERY BEST**.



## CANOPY IS A CERTIFIED GREAT PLACE TO WORK™

Canopy Children's Solutions, earned the designation of a Certified Great Place to Work™ in 2020. Great Place to Work is the global authority on workplace culture, employee experience, and the leadership behaviors proven to deliver market-leading revenue and increased innovation. Certification is a significant achievement as it is only held by three other organizations in Mississippi.



***EVENTS***

**CANOPY BELIEVES IN THE POWER OF TOGETHERNESS – TOGETHER IN HOPE AND TOGETHER IN RESILIENCE.**

Due to the pandemic, Butterfly Ball 2020 was cancelled. Illuminate Hope and Share Hope were both designed to be safe, in-home, and community experiences during this moment to elevate mental wellness.

## SHINE THE LIGHT ON MENTAL HEALTH

Shine the Light on Mental Health, presented by Trustmark, provided resources, activities, and experiences to usher resilience, hope, and healing for all Mississippians. Two-time Pulitzer Prize finalist and Mississippi editorial cartoonist, Marshall Ramsey, illustrated a public service announcement urging Mississippians to shine a light on mental health.

“TRUSTMARK CARES DEEPLY ABOUT THE WELLNESS OF OUR COMMUNITY AND WAS PROUD TO PARTNER WITH CANOPY TO SHINE THE LIGHT ON MENTAL HEALTH. NOW IS THE TIME TO SHINE YOUR LIGHT FOR YOURSELF AND OTHERS.”

*Jerry Host, Executive Chairman, Trustmark*



ILLUMINATE HOPE · SATURDAY, OCTOBER 10, 2020

Illuminate Hope, sponsored by Baptist Memorial Health Care, was an experience to bring communities together in one accord to focus on mental wellness, resilience and hope for the future. On World Mental Health Day, participants received a curated experience box to navigate a special evening dedicated to mental wellness and resilience that culminated with a paper lantern release.

“WITH THE INCREASED ANXIETY AND SEPARATION FROM FAMILY AND FRIENDS AS A RESULT OF THE COVID-19 PANDEMIC, WE ARE FACING A GLOBAL MENTAL HEALTH EMERGENCY. IT’S MORE IMPORTANT THAN EVER THAT WE SHINE A LIGHT ON THIS ISSUE AND PROVIDE ACCESS TO COMPASSIONATE CARE AND TREATMENT.”

*Caitlyn Hayden, System Community Outreach Senior Coordinator, Baptist Memorial Health Care*



**SHARE HOPE · FRIDAY, NOVEMBER 13 - SUNDAY, NOVEMBER 15, 2020**

Share Hope, presented by the C Spire Foundation, was a weekend of shining the light on mental health in the community. Outdoors at Highland Village, the weekend featured activities focused on mental and physical wellness including the Kindness Fashion Show and sunset yoga. To anchor the experience, Highland Village's Friendsgiving event on Friday benefitted the mission of Canopy.

"IT HAS BEEN SUCH A BLESSING TO SEE THE EATERIES AND RETAILERS OF HIGHLAND VILLAGE COME TOGETHER TO RALLY AROUND THIS IMPORTANT CAUSE, AND THE TIMING COULDN'T BE MORE PERFECT AS WE KICK OFF THE HOLIDAY SEASON. IT IS OUR HOPE THAT MANY LIVES WILL BE TOUCHED AS A RESULT OF THIS INCREDIBLE WEEKEND, AS WELL AS MANY MEMORIES MADE."

*Lynsie Armstrong, Marketing Director, Highland Village*



### 5K4KIDS CANOPY CARES RUN • MAY 2020

The 5K4Kids Canopy Cares Run, presented by Southern Farm Bureau Casualty Insurance Company and Southern Farm Bureau Life Insurance, transitioned to a virtual race in 2020. Participants raced all month-long choosing their own the date, time, and activity. The event kicked off Children's Mental Health Awareness Month.



### MICROSOFT INCLUSION ROCKS • MAY AND OCTOBER 2020

Inclusion Rocks, presented by Microsoft and benefitting Canopy, historically held in the Washington, D.C. area, transitioned to a virtual format in 2020. Virtual events included Trivia Night, Microsoft Families Got Talent and a celebration concert featuring Microsoft musicians.



***"I'M PLEASED TO BE WORKING FOR A COMPANY LIKE MICROSOFT THAT IS AN ENABLER OF CHANGE. BUT EVEN MORE HAPPY, IF NOT ECSTATIC, THAT MICROSOFT AND CANOPY TOGETHER ARE NOT CHANGING BITS AND BYTES. WE ARE CHANGING CHILDREN'S LIVES."***

SCOTT PRICE, GENERAL MANAGER, MICROSOFT FEDERAL CONSULTING DELIVERY

# TRANSFORMATIONAL PARTNERS

BIG IMPACT REQUIRES SIGNIFICANT PARTNERSHIPS, COLLABORATION, FEEDBACK, INNOVATION, AND COMMITMENT. THAT IS WHAT CANOPY'S TRANSFORMATIONAL PARTNERS ARE ALL ABOUT. "WE SIMPLY COULD NOT PROVIDE THE DEPTH AND BREADTH OF OUR SOLUTIONS WITHOUT TRANSFORMATIONAL PARTNERS COMING ALONGSIDE US TO SUPPORT US, ENCOURAGE US, HOLD US ACCOUNTABLE, AND GIVE US THE FUEL TO DRIVE REAL OUTCOMES FOR MISSISSIPPI CHILDREN AND FAMILIES. WE ARE ALL IN THIS TOGETHER AND THAT NOT ONLY MAKES CANOPY BETTER, IT MAKES MISSISSIPPI BETTER."

*John D. Damon, PhD Canopy's CEO*

## \$100,000 AND ABOVE

BANCORPSOUTH | CAL-MAINE FOODS INC. | ERGON FOUNDATION INC. | MISSISSIPPI FARM BUREAU CASUALTY INSURANCE COMPANY  
SOUTHERN FARM BUREAU CASUALTY INSURANCE COMPANY | TRUSTMARK NATIONAL BANK | WARE FOUNDATION  
WARREN COUNTY BOARD OF SUPERVISORS

## \$50,000 - \$99,999

CAPITOL STREET LLC | LARRY AND MICHAEL JOHNSON FAMILY FOUNDATION | MORGAN-WHITE GROUP  
THE NEIGHBOR'S KEEPER ADVISED FUND OF THE COMMUNITY FOUNDATION OF MIDDLE TENNESSEE | REGIONS FOUNDATION

## \$10,000 - \$49,999

DR. KAY AND DR. ROBERT ABNEY | ADVANCE MISSISSIPPI | BAPTIST MEMORIAL HEALTH CARE  
BOOLOS + OAKES CPA FIRM | CENTURY CLUB CHARITIES INC. | ENTERGY MISSISSIPPI INC.  
THE FOUNTAIN FAMILY FOUNDATION | THE H.F. MCCARTY, JR. FAMILY FOUNDATION  
HENRY AND MARTHA HEDERMAN CHARITABLE FOUNDATION | HELEN AND JOHN C. LEWIS | MCNULTY FOUNDATION  
LYNN AND THE HONORABLE DELBERT HOSEMAN JR. | LAURIE H. MCREE | MICROSOFT | HOLLEY AND DON NOBLITT  
REDMAN FOUNDATION | REGIONS | SIMMONS EROSION CONTROL INC. | KRISTIE AND STEVEN SPEIGHTS  
SUNRAY TANNING LLC | ST. DOMINIC - JACKSON MEMORIAL HOSPITAL | UNITED WAY OF WEST CENTRAL MISSISSIPPI  
VICKSBURG FOREST PRODUCTS LLC | SUSAN AND BUSTER WELLINGTON | WILLIAM H. ELLSWORTH FOUNDATION



2020

# DONORS

## PARTNERS IN GROWTH (\$5,000 - \$9,999)

KATHY AND LARRY ACCARDI  
LISA AND MIKE BEMIS  
C SPIRE FOUNDATION  
THE CHEW FOUNDATION  
CROWDER CONSULTING LLC  
DAN DELANEY  
KK BUTEAU LLC  
CYNTHIA AND TIM MAHAFFEY  
MS A AND B ENTERPRISES LLC  
MUTUAL OF AMERICA FOUNDATION  
DR. JILL AND DR. PAUL W. PIERCE  
MARY AND RICHARD PUCKETT  
SAM E. AND BURNICE C. WITTEL FOUNDATION  
MARGARET E. SWAIN  
TONI TOWNES-WHITLEY  
JEANINE AND MICKY WATKINS  
THE WESLEY A. CALDWELL FOUNDATION  
HOLLY WOODEN

## PARTNERS IN PROGRESS (\$2,500 - \$4,999)

TAMMY AND MARK AMIS  
BKD LLP  
CHILI FOR CHILDREN  
DANNY CUPIT  
HELAINA AND DR. JOHN D. DAMON  
DOLLAR GENERAL LITERACY FOUNDATION  
SHIRLEY AND ALFRADO DONELSON  
KATHY AND RANDY EURE  
FACEBOOK PAYMENTS INC.  
TONYA AND LARRY FAVREAU  
FRONTSTREAM  
TIM GALANTE  
GRAEBER FOUNDATION  
STACEY AND DR. TERRY L. HIGHT  
SHEA AND JAKE HUTCHINS  
JUNIOR LEAGUE OF JACKSON  
DR. SHANI AND JACKIE MECK  
LATOYA C. MERRITT  
HELEN AND JAMES N. C. MOFFAT III  
MARY MYERS  
BETH CHADWICK AND MICHAEL POLLITT  
PRESBYTERIAN WOMEN - FIRST PRESBYTERIAN  
CHURCH

KATHERINE AND ROB PUCKETT  
ROSS AND YERGER INSURANCE INC.  
SOUTHERN FARM BUREAU LIFE INSURANCE  
COMPANY  
ANGIE AND WAYNE SUMRALL  
TARVER FOUNDATION  
DORIAN E. TURNER  
THE ULTIMATE SOFTWARE GROUP INC.  
TAHETI AND ERIC WATSON

## PARTNERS IN PROMISE (\$1,000 - \$2,499)

WES ANDERSON  
GINGER AND JOHN ARLEDGE  
MIMI AND RICHARD C. BRADLEY III  
DRS. NIKKI AND KEN CLEVELAND  
COMMUNITY FOUNDATION FOR MISSISSIPPI  
MEREDITH AND JAMES CREEKMORE  
CROSSWAY CHURCH  
HELEN L. DALEHITE  
PATTI AND BARNEY DALY  
THOMAS S. DAVIS  
BETH ANNE AND COREY DICKERSON  
MARSHALL DICKERSON  
RICHARD J. ELKUS  
LEE G. FULLER  
JOEY AND JAMES GARNER  
DOLLY AND WESLY GOINGS  
LINDSAY AND JASON GRINSTEAD  
TOM HALL  
JENNIFER AND ROGER HOLLAND  
OLIVIA AND GERARD R. HOST  
ELIZABETH AND STEVEN A. LINDSAY  
MAUREEN AND SAMUEL LONG  
PEGGY AND JOHN M. LOUIS  
JOYCE AND OSCAR MISKELLY  
HEIDI AND MARK NOEL  
NORTHWOOD CHURCH -  
GULFPORT/WIGGINS CAMPUS  
JOSEPH ORAVEC  
JOSHUA B. OWENS  
JOEL PASTOREK  
HEMANT PATHAK  
DANA PETERKIN  
GINA-KAYE ROLLINS  
LORI AND RANDY SANDERS

## THE CHILDREN'S PROMISE ACT TAX CREDIT

In 2019, the Mississippi Legislature passed The Children's Promise Act. This historic legislation encourages community partnerships by providing Mississippi state tax credit opportunities for businesses and individuals who donate to qualifying nonprofits that are working to create impact for children and families in or at risk of entering the foster care system. Businesses may receive a dollar-for-dollar state tax credit for up to 50% of their state tax liability and individuals may receive a dollar-for-dollar state tax credit up to \$1,800 by donating to Canopy.

"THE FUNDING FROM THIS PROGRAM HAS BEEN TRANSFORMATIONAL FOR CANOPY. THE PARTNERSHIPS AND RELATIONSHIPS WE HAVE GAINED ALONG THE WAY HAVE AND CONTINUE TO MAKE US BETTER. IT REALLY DOES TAKE EVERYONE IN THE COMMUNITY COLLABORATING TO CREATE BIG IMPACT."

*Heidi Noel, Canopy's Director of Development*

MICHAEL SCHMIDT  
SANDEEP SETHI  
ANGELA K. SIDES  
JUNE AND BILLY SIMS  
ELIZABETH SMITH  
JUDY AND JACK SPRADLING  
ST. ALBAN'S EPISCOPAL CHURCH  
JASPER STONE  
SUNBELT SEALING INC.  
KAREN AND ANDY TAGGART  
STEPHANIE AND DEAN TANNER  
ELIZABETH TAYLOR  
MELANIE AND SAMUEL TAYLOR  
TAYLOR GROUP INC.  
VICKSBURG HOUSING AUTHORITY  
VIZALINE LLC  
WADE WARD

## PARTNERS IN COMPASSION (\$500 - \$999)

ARIN C. ADKINS  
ATLAS ROOFING CORPORATION  
BLAKE BADOLATO  
JACKIE P. BAILEY  
DAN BISCUP

MARIO BRANDAN  
JEFF BRILL  
SARA BROOKS  
DONNA AND JOHN C. BRUCE  
THE CAPITAL GROUP COMPANIES  
CHARITABLE FOUNDATION  
KAREN AND WILLIAM CLEMENT  
COSTCO WHOLESALE CORPORATION  
ANNA AND MICHAEL CRAWFORD  
CRAWFORD STREET UNITED METHODIST CHURCH  
DAVE DENNIS  
DOTTIE AND JOE DONALDSON  
CHUCK DORSETT  
CAROL AND RONNIE EDMONDS  
ELKS LODGE NO. 95 BPOE  
SALLIE AND HUNTER L. FORDICE  
FOSTORIA NEIGHBORHOOD ASSOCIATION INC.  
JULIE AND GERARD GIBERT  
REGINA GINN  
NEVA F. GREENWALD  
LOUISE AND TOM GRESHAM  
HAMMETT GRAVEL COMPANY INC.  
TROY HARRY  
SARAH HOWE  
WHITNEY L. JACKSON  
JENNIFER AND PEDER JOHNSON

KIM AND QUINN JORDAN  
KROGER COMMUNITY REWARDS  
JANICE AND CHARLES LANGDON  
GINGER AND ROBERT LEARD  
LIAO FAMILY TRUST  
RAMONA AND JAMES D. LOCKETT  
JENNIFER LOYTTY  
OLIVIA AND BRAD MALEY  
JENEE M. MASON  
ERIN MCCOY  
SHARON AND MARK MCCREERY  
KAY AND RICHARD MCREE  
LIZ AND KERK MEHRLE  
MIDWAY CHURCH OF CHRIST  
TAMMY MILLER  
PETE J. MONTALBANO  
JAMES W. MOORE  
MELANIE AND RICHARD MORGAN  
MARGARET AND SAM MORSE  
KERRY AND PAUL PARKER  
JAYDEN PERREAULT  
REDWOOD PT.O.  
JASON RITCHIE  
BETTY AND JAMES R. ROY  
CORINNE AND CHARLES SAMPSON  
MARY AND CHRIS SHAPLEY  
SMITH BOAT LEASING LLC  
ANNE AND PARKER SNOW  
DAVID STRONG  
BEAN AND FLOYD M. SULSER  
HARMONY THOMAS  
NINA AND BILL TOMLINSON  
TRACE COLONY PROPERTIES LLC  
TWO MEN AND A TRUCK  
UNITED METHODIST WOMEN - LONG BEACH FIRST  
UNITED METHODIST  
UNITED WAY OF METROPOLITAN NASHVILLE  
DEERY AND HARRY WALKER  
TERRI AND DUFF WALLACE  
GAY AND GARY WATTS  
MARY ALICE AND DONALD WHITE  
MARJORIE AND H. A. WHITTINGTON  
BRENDA AND BRYMAN E. WILLIAMS  
KYM AND CLAY WILLIAMS  
ELIZABETH W. YOUNG  
YOUNGER FOUNDATION

## PARTNERS IN CHANGE (\$250 - \$499)

SATYN M. ADAMS  
CHRISTY AINSWORTH  
AMAZONSMILE  
WILLIAM ANDERSON

SHAUN ANDROFF  
SHARON AND JIM ARMSTRONG  
ALLISON BARB  
LAUREN AND FRANK BENNER  
MELANIE AND JAMEY W. BURROW  
SUSANNAH AND CHRIS CHERNEY  
CHRIST EPISCOPAL CHURCH  
MARY K. CHRISTMAN  
KATIE AND JAMIE CHUSTZ  
COASTAL FAMILY HEALTH CENTER  
ANNE CASHMAN COLE AND T. M. COLE  
COMBINED FEDERAL CAMPAIGN  
TARA CONROY  
LEE COPELAND  
AMEY AND KEITH CROUSILLAC  
CHARLES M. DICK  
AUDREY B. DODD  
DORIAN E. TURNER PLLC  
ELIZABETH AND ROBERT J. DUDA  
ANNE AND MIKE DULSKE  
MARY AND BOB A. DUNAWAY  
KAY AND FRED FARRELL  
KRISTY J. FLEMMING  
CECILIA FUNG  
KATIE AND MARCUS GINN  
ELISE AND BILL GRETE  
KEARNDRAD D. HART  
MELISSA AND MACK HEIDELBERG  
JODY HERRING  
ROCHELLE AND JASON HICKS  
ELISE JORDAN AND MICHAEL HOGAN  
HOMETOWN MEDICAL LLC  
JENNIFER AND BENSON HSU  
VICKI AND WARREN HUSBAND  
THE I3 CARES FOUNDATION  
CASSANDRA JONES  
RACHEL KING  
CATHERINE KUENZEL  
MEREDITH AND MICAH MCCULLOUGH  
AVIS T. MCGOWAN  
BETH AND JAY MCNAMEE  
MICHAEL BONNER LAW FIRM  
TRENTON M. MILLER  
SYLVIA AND RICHARD MILLS  
GREG MYERS  
ADAM NOWAK  
PATTY OBERMAIER  
BARRY PITTS  
CATHY AND CHARLES F. PORTER  
MADELINE POTTER  
SCOTT A. PRICE  
LEIGH AND TODD REEVES  
MARIANNA AND KEITH RUSSELL  
CHARLOTTE AND CALVIN SEALS

MARY ELIZABETH AND J. G. SMITH  
TEMPLE BAPTIST CHURCH  
JENNIFER TYNER  
CHRISTIAN WARE  
MERI AND HANK WATERER  
MARC WAYBRIGHT  
WESLEY B. JONES ELECTRICAL INC.  
KAY AND TOM WINTER

## PARTNERS IN CARE (\$1 - \$249)

CAMILLE AGU  
KELLEY ALEXANDER  
SONYA ALEXANDER  
ALLEIN BIBLE CLASS  
DEANNA ALLEN  
ANONYMOUS  
ROBIN AND WILLIAM ANDERSON  
SHIRLEY ANDERSON  
LINDSAY L. APOSTOLOPOULOS  
LILLIAN P. APPLETON  
ASHTON E. ATEs  
MICHELLE ATEs  
SAMORI AUGUSTO  
SANDRA HORACE H. BAGGETT  
KARI L. BAKER  
LYNDA AND ERIC BALFOUR  
BANK OF MORTON  
LAURA KATHERINE BARKER  
SUSAN BATES  
WENDY AND JOHN B. BEARD  
ABBY BEASLEY  
SHANICE D. BEAVERS  
BRADLEY BELLEW  
GINGER AND ERNEST S. BERNEY  
DANYELLA BERRY-TERRELL AND CARLYTON TERRELL  
JAY BHALODIA  
MARY JOHN AND EASY BIEDENHARN  
DR. JASON AND SUSANNE BLALOCK  
LAURA BLOOMBERG  
BETH AND CHRIS BOONE  
CRISLER AND DOUG BOONE  
DAWN AND MARC BOONE  
ELIZABETH AND STEWART BOONE  
LIZA AND BERNARD BOOTH  
MARY VIRGINIA BOST  
KELLY AND CORY BOWLES  
DEBORAH BRADSHAW  
BONNIE AND DAVID BRIDGERS  
CHRISTINE AND BRIAN BRIDGES  
ASHLEY L. BROOKS  
DEBBIE AND TODD BROOKS  
QUINCY BROOKS

DIANE AND CRAIG BROWN  
KATHY AND BRETT BROWN  
LEAH BROWN  
LUS BROWN  
JOANN AND ROBERT BURKE  
SUE BURKE  
CHRISTY CAIN  
RACHAEL AND JAMES CALDWELL  
NANCY M. CALDWELL  
LAURA CALHOUN  
JENNA CARPENTER  
LUCAS CARR  
KIM AND DARRON CASE  
TERRY AND JOHNNY CHAMPION  
ELAINE AND LLOYD R. CHANCELLOR  
KARRI CHANEY  
YVONNE CHAPLIN  
ELIZABETH CHASTAIN  
CINDY CHEEKS  
KIM AND MATTHEW CHOW  
CLARK CONSTRUCTION GROUP LLC  
ANGIE CLARKE-SMITH  
CURTIS CLAY  
MARIANNE AND DAVID COKER  
JAMES CONLEY  
FELISIA H. COOPER  
CLAIRE COTTRELL  
JENNIFER A. COTTRELL  
TOWNLEY COZAD  
CAROL AND JULIAN CRAWFORD  
ELLERY AND TURNER CREWS  
TAYLOR CROUSILLAC  
LYNNE AND DALE CURRIE  
CHATAMBRA CURRY  
KELLY CURTIS  
CYBERGRANTS SPV LLC  
DARBY DAMON  
BRIAN DAUGHERTY  
BRAD DAVIS  
EMILY DAVIS  
KELVIN DAVIS  
MIKE DAVIS  
ROBIN DAVIS  
PAT AND CHARLES M. DECKER  
ESPERANZA AND EDDIE DELGADO  
WENDY DELMOLINO  
DEPARTMENT OF MENTAL HEALTH STATE OF MISSISSIPPI  
JAVIER DEROSSETTE  
DIVINE DONUTS INC.  
DAVID DIXON  
PAM AND DONALD DOLLAR  
LOVIE S. DRUMMOR  
JACLYN AND ERIC DURHAM

DONNA AND BRAD DYE  
ELIZABETH AND BOWEN EASON  
LYDIA ECHOLS  
AUDREY ECKERSON  
CLAY ECKERSON  
EVAN ECKERSON  
JENNIFER ECKERSON  
MUNA A. ELTOM  
TRACI S. EPPS  
KAYLA AND PERRY ERICKSON  
DANIELLE ESTRADA  
MARIA ETHERIDGE  
CAROL AND GEORGE Q. EVANS  
DONNA AND ROBERT M. EVANS  
ELIZABETH S. EVELAND  
ROBIN EWER  
DAN FAIN  
SHILO E. FARMER  
PERRIS FAYARD  
BETH AND KEVIN FEISEL  
GENNY FISCHER  
SALLY AND JOHN FLETCHER  
SUZY AND RAY FORAL  
VIRGINIA FORD  
KEVIN FOSSETT  
FREDA FREEMAN  
MIRANDA FURNACE  
S. R. AND HUGH GATES  
FRANCES GEORGE  
GIVGUARD CHARITABLE INC.  
GRAY-DANIELS FORD BRANDON  
KURTWOOD GREENE  
TRACI AND DUSTIN GRUBB  
NIKKI HAASE  
KAREN AND EDDIE HACSKAYLO  
KARON AND TOXEY HALL  
HAYLIE HAMMETT  
CATHY HANSEN  
DAN HART  
JOAN E. HART  
PAT AND KENNETH L. HARTLEY  
CHRISTOPHER E. HATCHER  
MICHELLE HATTON  
HAWKINS UNITED METHODIST CHURCH  
CHRISTINE AND ROBERT HEATH  
JOYCE AND ROBERT P. HENDERSON  
NAKISHA HENDERSON  
QUIANA HICKS  
HIDDEN HILLS SUBDIVISION  
MELISSA AND JACK HILL  
KRYSTLE HILLIARD  
TIARA HILLIARD  
WANDA HILLIARD  
BRENDA AND RICHARD HOBBS

MELANIE HODGE  
AMY E. HODGSON  
HEATHER HONEYCUTT  
JENNIFER AND GREG HOPPING  
ANITA HOSSLEY  
KATHERINE AND WILLIAM HOSSLEY  
CAROL MICHELLE HUDSON  
JANICE AND HUBERT E. HUNTER  
MARC HURST  
LINDSAY AND WALT HUURMAN  
JOHN INGRAM  
TERRI AND WILLIAM IUPE  
J. MCLAUGHLIN  
JACK ROSS WEED CONTROL LLC  
MARY AND ARTHUR C. JACKSON  
ANNIE JACKSON  
I'SHA W. JAMES  
NATALIE AND THOMAS D. JAMES  
KEANU JENNINGS  
LARRY JEWETT  
JOHN FAYARD/MOVING & WAREHOUSING LLC  
AMANDA JOHNSON  
DAWN JOHNSON  
TYRA JOHNSON  
ALBERTSTEIN JOHNSON-PICKETT  
ERIN JONES  
PAMELA E. JONES  
MEGAN KAUFMAN AND KEVIN JONES  
RUSSELL JORDAN  
KARIN JORGE  
BERNELL AND JOHN R. KELLY  
CAROLINE KEMP  
MARY AND TED H. KENDALL  
KENDRA SCOTT LLC  
SUTHERLAND G. KENNEDY  
LEALICE KERN  
MOLLY KING  
TANYA KLAPMUTS  
CONNIE AND TOM KOSSEN  
LATAMEKA LAWSON  
SHINESE LEACH  
CATHEY AND GEORGE LEE  
JOSEPH L. LEE  
KARIN LEWIS  
MICHELLE AND KEVIN M. LEWIS  
SAUNDRA LOVING  
ALLISON AND AARON LOWTHER  
IRIS LOWTHER  
KYLA LYNCH  
MELODY LYNCH  
SHANAE LYTTLE  
M N M ENTERPRISES LLC DBA MCDONALD'S  
MARION AND JAMES MAHONEY  
SHAQUITA MALLETT

CINDY MAR  
ALEK MARKOVIK  
DONNA MARSHALL  
KIM MARTIN  
MEGAN R. MATHIAS  
KACIE AND BARON MATTHEWS  
CINDY AND RICKY L. MAY  
MAY AND COMPANY LLP  
SHIRLONDA MAYS  
WENDALL MAYSON  
NICOLE MCCREE  
HOLLY Y. MCDAVID  
ANDREA MCGEE  
KAWANA MCGOWAN  
DON MCGRAW  
RYAN MCGUIRE  
JEAN AND ROGER MCKAY  
ARTHUR L. MCLAUGHLIN  
STACI AND JEREMY MCNINCH  
ALESHA M. MCQUARTERS  
LAURA MEALY  
DOROTHY AND WILLIAM M. MEEKS  
JOAN R. MEEKS  
ERIC MEISTER  
DAVE MILLER  
NATHANAE MINOR  
WILLIAM MINOR  
MARY SUE AND DON MITCHELL  
JANET AND JAMES N.C. MOFFAT IV  
VAL MOORE  
JEANETTE MORGAN  
TANYA MOSHER  
TERESA AND KEN MOSLEY  
SYBIL MOSS  
DAWN MUCHA-JOHNSON  
WENDY AND CHUCK MULLINS  
SAM MUTREJA  
ROBIKA MYLROIE  
SYLVIA D. NEAL  
NETWORK FOR GOOD  
MELISSA NEWMAN  
WHITNEY NEWMAN  
LEXI NEWMARK  
KASHAY NEWTON  
HOANG NGUYEN  
SHAWN AND CHRISTOPHER NILES  
ANGELA AND DOUG NOBLE  
PENNY NOLAND  
WYNN AND CHARLES NORRIS  
SUNNY D. OBERTO  
SUSAN AND WILLIAM G. OSBORNE  
BRANDY OVERSTREET  
JESSICA PACKER  
TABATHA PAGTAKHAN

CHRISTINA PALAZZO  
PAIGE PALAZZO  
PAR BUSTERS GOLF ASSOCIATION  
KEVIN PARADINE  
JAMES A. PEDEN  
PELAHATCHIE/GULDE UNITED METHODIST WOMEN  
ANN AND WILEY R. PHILLEY  
VELDA AND J. S. PHILLIPS  
MELISSA AND ANDY PHILLIPS  
JESSICA PITTS  
CRYSTAL PORSCHAKIN  
PORTERS CHAPEL UMC  
HEATHER POSPICHEL  
CYNTHIA PRINCE  
AMANDA AND JEREMY QUARLES  
MEGAN RANNEY



## DRIVING A FRESH START

Renee left an abusive relationship while pregnant and parenting her 9-year-old. Hours away from her support system, she was placed in a Safe House and finally a housing assistance program to help her get back on her feet. After her daughter was born, Renee suffered severe complications that nearly killed her. Her newborn also contracted COVID-19 shortly after discharge from the hospital. With nowhere else to turn Canopy's in-CIRCLE program became Renee's source of support.

With limited income and no access to reliable transportation, Renee struggled to find employment as well as care for her family's needs. Canopy's in-CIRCLE team searched high and low for available resources to find Renee a car. Just then, a hero from within the Canopy family stepped in to provide Renee with a reliable car and a fresh start.

REDWOOD METHODIST CHURCH  
DONNA AND TOM RICH  
NICHOLE RICHESON  
CAROLE AND ART RING  
CATHY AND STEVE G. ROBERTS  
MONICA ROBERTS  
DANA AND BILL ROBERTSON  
MARGARET AND BARNEY ROBINSON  
ANTONETTE ROGERS  
MARTHA J. ROGERS  
ALLISON AND DEREK ROOKER  
ROBERT RUSSELL  
CYNTHIA S. SCHAEFER  
REED SCHAUB  
WILLIAM SCHOEN  
CHRIS SCHRAF  
PATRICIA SCHWINDAMAN  
JIA AND DAVID SCOTT  
CHERYL H. SCOTT  
GLORIA AND ALAN SENTER  
SERVICE KING COLLISION REPAIR  
DAVE SHAY  
SYLVIA SHOEMAKER  
SHOPPING GIVES  
KENDRA SMILEY  
LUANNE SMITH  
SHELIA AND J. S. SMITH  
TONJA SMITH  
ROB SNYDER  
GEORGE SPANAKIS  
MOLLY STALEY  
STEPHANIE STAMPS  
BECKY STERNER  
TERRENCE STEVENSON  
KAREN STEWART  
AMY N. STOVALL  
PAIGE STRICKLAND  
SHIRLEY AND FRANK SWEENEY  
DEANA SWEENEY-GRAMMO  
DAWN TAYLOR  
WHITNEY TAYLOR  
CASIYA THANIEL  
JOHN THARP  
RAVINE THOMAS  
LEX THOMAS  
MONICA THOMAS-HURST  
NICOLE AND JACOB THOMASON  
THOMPSON AND ASSOCIATES LLC  
TRACEY THRASH  
KRISTIN AND RICHARD TILLERY  
KAREN TINE  
SARA AND BRAD TISDALE  
JAN AND ANDREW R. TOWNES  
ELLEN AND MARCUS TREADWAY

WENDY AND MARK TREVILION  
CHARLES TRISDALE  
LISA M. TRUNELL  
CAROLYN F. TUREAUD  
PATRICIA AND RICHARD TURNER  
JEFFERY TURNER  
UNITED HEALTH CARE  
UNITEDHEALTH GROUP  
DAVID VALDEZ  
VICKSBURG ALUMNAE CHAPTER - DELTA SIGMA  
THETA SORORITY INC.  
VICKSBURG ELKS LODGE NO. 95 "DOES"  
CANDY VOSS  
KIM VU  
SHIRLEY WADSWORTH  
LAURA AND GRANT WALKER  
SPENCER WALLACE  
GREGG WALSH  
AMANDA B. WARD  
JOHNNY WARNOCK  
DONTAVIOUS WATKINS  
GRACIE WATSON  
SHAWN T. WATSON  
SUZAN WATSON  
OLIVIA WATTS  
MARK L. WEBB  
ANNE S. WEBSTER  
PAUL B. WELCH  
BEATRICE WELLS  
ANGELA WHITE  
PETE WHITSON  
MAGAN WILLIAMS  
NYA WILLIAMS  
HANNAH WILLISTON  
DANIEL C. WILSON  
SITANIEL WIMBLEY  
CHRISTOPHER WINDFIELD  
PATRICIA AND KENNY WINDHAM  
ALYSON WOODRUFF  
KRISTY AND MICHAEL WOOTEN  
SABRENIEE A. WRIGHT  
SHERRIBETH WRIGHT  
HART WYLIE  
CINDY AND DON YAUGER  
ROBIN YOUNG  
YOURCAUSE LLC  
CHRISTINE ZMUDA

### IN-KIND

PEGGY AINSWORTH  
ALL MY CHILDREN CHILD CARE CENTER  
ALICIA ALLEN  
ALPHA PHI ALPHA FRATERNITY, INC.-ZETA MU  
LAMBDA CHAPTER

LESLIE ANDERSON  
ANDERSON UNITED METHODIST CHURCH  
BANKPLUS  
HALEY BARBOUR  
BATESVILLE CASKET  
KAREN BATICUATRO  
ZANE BEARRICK  
SHARON BEASLEY  
TIESHIA D. BELL  
PAT BELL  
BELLALAVITA PHOTOGRAPHY  
LISA M. BEMIS  
LAUREN S. BENNER  
BLACK CREEK OUTFITTERS  
BLUECROSS BLUESHIELD OF MISSISSIPPI  
BECKI BOLM  
BOOKS A MILLION  
OLIVIA BOONE  
BOVINA ELEMENTARY SCHOOL  
MIMI AND RICHARD C. BRADLEY III  
BRIDAL AND FORMAL BOUTIQUE HOUSE OF TUX  
TAMAR BROOKS

BILL BROWN  
CHERI BROWNING  
CAPITAL AREA SUNSET ROTARY CLUB  
PAUL CARRICO  
SELENIA CARRICO  
PAULA CARRUTH  
BARBARA CASHMAN  
ANGELA CHAPIN  
CHURCH OF THE CROSSROADS  
CHURCH OF THE HOLY TRINITY  
CINNAMON TREE  
TAMIKKA COLEMAN  
ANNA AND MICHAEL CRAWFORD  
CROSSGATES BAPTIST CHURCH  
CROSSWAY CHURCH  
AMEY AND KEITH CROUSILLAC  
RENEE DAVIDSON  
CHRISTINE P. DAVIS  
DELTA WESTERN  
BILLY DEVINEY  
DIXIE NATIONAL LIVESTOCK SHOW  
DOLLAR GENERAL - LONG BEACH  
DOTTIE AND JOE J. DONALDSON  
ELKS LODGE  
ANGELA ELLIS  
KATHY AND RANDY EURE  
FAMILY RESCUE CENTER  
FARMHOUSE  
LISA FERGUSON  
FERRY FIRE DEPARTMENT  
FIRST BAPTIST CHURCH - VICKSBURG  
FIRST PRESBYTERIAN CHURCH - VICKSBURG  
FRANCES GEORGE  
ANDY GIPSON  
GLIDWELL TRAILER SALES  
JOE GOLDEN  
GOSPEL TEMPLE M. B. CHURCH  
DICK GRAU



## BEDS PROVIDE PEACEFUL SLEEP FOR A FAMILY

Margaret is a single mother to seven children. While they don't have much, Margaret has taught her children to be respectful and to show gratitude for the things they do have. The family resides in a quaint three-bedroom home and has been blessed by donations through their affiliation with Canopy. However, one lingering need was beds for her daughters, who at ages 5, 10, and 15 all shared one full-size bed.

A generous hero gifted the family with a set of bunk beds and a new twin bed for the girls. They also provided the girls with accompanying sheets, bedding, pillows, and more. Canopy staff installed the beds and each of these children enjoyed being nestled all snug in their very own beds just in time for Christmas.

RUBY GREEN  
GRESHAM PETROLEUM COMPANY  
DEBORAH GRIMES  
JEAN GROBE  
GULFPORT POLICE DEPARTMENT  
GUMBO POT  
MONICA AND RAY HARRIGILL  
HAWKINS UNITED METHODIST CHURCH  
HENRY AND MARTHA HEDERMAN CHARITABLE  
FOUNDATION  
JEANNIE HIGH  
DENISE HOGAN  
ALI HOPSON  
LYNN AND DELBERT HOSEMANN  
KRISTAL HOWELL  
CHARMAINE HUDSON  
LAURA HUNT  
LILLIAN HUNT  
ATHENA HUTCHINGS  
IMMANUEL BAPTIST CHURCH  
ALYSSA JAMES  
TIFFANY JAMISON  
MELODY JOHNSON  
LEAH JOHNSON  
JULIE P. JOHNSON  
JEAN JOHNSTON  
TAMMIE JONES  
BRYAN JONES  
JUNIOR LEAGUE OF JACKSON  
KIDS ARE KIDS LEARNING CENTER, INC.  
KNITWITS  
KREWE UNIQUE COMMUNITY OUTREACH  
LAKELAND PRESBYTERIAN CHURCH  
GINGER AND ROBERT E. LEARD  
MADISON LINDSEY  
CANDACE LOGUE  
LONGVIEW HEIGHTS BAPTIST CHURCH  
LOVETT ELEMENTARY SCHOOL  
BERNICE MACK  
MELINDA MALLET  
MELISSA A. MALOUF  
KRISTIN MARREN  
THOMAS MAYFIELD  
JEAN MCALPIN  
MYRON MCCOO  
FRED MCMURRY  
DETRUCH MCNEELY  
MONICA MCNEELY  
LIZ AND KERK MEHRLE  
TONI MILES  
MILLSAPS TRI DELTA SORORITY  
MATT MILNER  
KIVEN MINER  
MISSISSIPPI COATS 4KIDZ

MISSISSIPPI FARM BUREAU FEDERATION  
MISSISSIPPI LAND BANK  
MOOSE LODGE  
MT. OLIVE UNITED METHODIST CHURCH  
KIM NAILOR  
GINA NELSON  
NEW VISION FELLOWSHIP CHURCH  
NORTHWOOD CHURCH -  
GULFPORT/WIGGINS CAMPUS  
NORTHWOOD CHURCH - LONG BEACH CAMPUS  
OFFICE DEPOT - SOUTHAVEN  
OMEGA PSI PHI FRATERNITY, INC. -  
IOTA UPSILON CHAPTER  
PAIGE PANTER  
PATRICK PARKER  
SEREENA PAYNE  
ANDY PHILLIPS  
PHILLIPS FARMS ELEVATOR LLC  
TRUDIE PORTER  
THE RADIO PEOPLE  
GINGER RASBERRY  
RED SQUARE CLOTHING CO.  
WARREN REED  
BETTY REED  
REGIONS



## KEEPING IT COOL FOR A FAMILY

The Hammond family moved into a new home and had very limited income to purchase necessities due to medical bills and illness. The family was having a difficult time with the mother, Geanna, being in and out of the hospital. Prior to their move, the family's refrigerator stopped working and their new home was not furnished with one upon arrival. Geanna tried desperately to locate a refrigerator which was a challenge with limited funds and inventory shortages due to the pandemic. The lack of refrigeration made it difficult to keep healthy foods in the home.

An anonymous hero provided the family with a refrigerator, which allowed the Hammonds to focus on getting Geanna healthy and providing for the family.

RENASANT BANK  
TOM RICH  
RIVERWALK CASINO  
GLENDA ROBBINS  
PATRICE ROBERSON  
VICKI ROLLINS  
DONIEALE N. ROSENKRANZ  
KAREN RUGGLES  
CHARLOTTE AND CALVIN SEALS  
SONDRA SEBALD  
SHOE SHOW #601  
NAOMI C. SHORT  
SIMMONS FARM RAISED CATFISH, INC.  
PATRICK SMITH  
MARY SMITH  
SOUTHERN FARM BUREAU LIFE  
INSURANCE COMPANY  
SOUTHERN MIDNIGHT RIDERS  
STAPLCOTN COOPERATIVE ASSOCIATION  
SHAUNDRA SUICYZER  
SUNRAY TANNING LLC  
TACKETT FISH FARMS  
PRISCILLA TENNER  
ANGELA THOMAS  
ODEL THOMPSON  
JERRY TORREY  
ANNA TRAN  
TRUSTMARK NATIONAL BANK  
SALLIE TULLOS  
TURNKEY PROPERTIES, LLC  
TYSON FOODS  
VICKSBURG THEATRE GUILD  
NIKKI VILLENEUVE  
MICHELLE VINSON  
WADE INC. - GREENWOOD  
WALMART SUPERCENTER  
SUSAN WARE  
BRAD WARNOCK

WARREN COUNTY EXTENSION OFFICE - 4H PROGRAM  
WATERVIEW CASINO & HOTEL  
WDBD FOX 40  
SHARI S. WHITE  
RUTH WILKERSON  
KYM AND CLAY WILLIAMS  
JEANETTE WILSON  
CHERIE WITHERS  
DIANNE WOLFE  
WORSHIP CHRISTIAN CENTER  
WXXV - TV  
CASEY YOUNGER  
JANIS ZAHN  
CHRISTINE ZMUDA

*This list reflects gifts made between January 1 and December 31, 2020. Every effort has been made to ensure accuracy.*

2020

# VOLUNTEERS

## INDIVIDUALS AND ORGANIZATIONS

MADISON ADCOCK  
JENIFER ADKINS  
JANIYA ANDERSON  
ANNALEIGH ANDREWS  
ABBY ARNETT  
ANN PARKER BALDWIN  
BEAUTIFULLY BROKEN  
BRITNI BELL  
DEVAN BERRY  
JACK BISHOP  
ENYLA BLACKMON  
ABBY BLANKS  
JUSTYCE BOGAN  
LIZA BOOTH  
HOLLIN BREWER  
MACEY BREWER  
ANDI BRICE  
KENDALL BROOKS  
TY BROOKS  
WILL BROOKS  
JOSEPH X. BROWN  
LISA BRUFFY  
BRENNIA BURKE  
ZAMAYA BURNSIDE  
CHAUN-MICHAEL BYNOE  
AJAI CABELL  
DEVIN CADDLE  
AVERY CALDWELL  
MEGAN CAMPBELL  
XAVIER CANNON  
ADRIONNA CARTER  
BLAKE K. CASE  
CARLY CHENNAULT

ANA CHUA  
ZANIYAH CLAYBORNE  
VALORIE COCHRAN  
ELIZABETH COLYER  
RAYDEN CONERLY  
CAITLYN CONN  
BRIANNA COX  
MARTIA CRAWFORD  
CAROLINE CROFT  
DARBY DAMON  
BRITTON DAVIS  
DE'CAYLA DAY  
MORGAN DILWORTH  
JERRILYN DIXON  
JENNIFER DRYDEN  
HAILEY DUKE  
JACK DURR  
TIFFANY DURR  
MCCOY EVANS  
EMILY FARMER  
ADDY FARON  
FIRST PENTECOSTAL CHURCH  
OF JACKSON  
LILY FLOWERS  
ALEXIS FOLSE  
GIGI FRASER  
ALEXA FRAZIER  
DAYSHAYLA GALMORE  
VANESSA GARDNER  
RHIANNON GARRETT  
CHARLOTTE GERMANY  
BRANDON GILLIAM  
MIRANDA GOSS  
ARIA GRADY  
KYMBRIANNA GRIGGS

BENTON GRUBBS  
MARY BRATTON GUEST  
AUDREY GUYNES  
DAISY HADLEY  
BAKER HALL  
LAUREN HARMON  
VICKI HATCH  
LESSIE HAYES  
NATALIE HERNANDEZ  
ERIANA HOLDEN  
WILLIAM HORNBACK  
HALLIE G. HOUSE  
TAYLOR HOWARD  
EVIE HUDGINS  
MIKE HUGHES  
KATELYN HULSEY  
MIKASIA HUNTER  
MARIA IBARRA  
ANGELINA ISTIPHAN  
JACKSON MEDICAL  
MALL FOUNDATION  
CARLA JAMISON  
ALEXIS JENKINS  
ALYSSA JOHNSON  
TYRA JOHNSON  
JAMAYA JONES  
PRECIOUS JONES  
SIMS JONES  
ELIZABETH KELLUM  
CAROLINE KEMP  
KCHRISTIAN KING  
DACHE KNIGHT  
MAGGIE KOURY  
APRIL LAHYAOUI  
JENNA LANCON

LAYTON LANDRY  
FRANCES LEDUFF  
KATELYN LEE  
MADISON LEE  
NICOLE LEJEUNE  
ANITA LOPEZ  
NIYA LOVE  
MADISON MAGOWN  
HEATHER MARSHALL  
TAMMY MARTINEZ  
ANNA MATTOX  
MICAIAH MAYES  
ROMYA MAYS  
KAITLYN MCCANN  
JORDAN MCCLELLAND  
CAROLINE MCCRANEY  
AMANDA MCDONALD  
TY'LIAH MCGOWAN  
KIVEN MINER  
LAUREN MONG  
AUGUSTUS MOORE  
CATHERINE MOORE  
JUDITH MOOREHEAD  
ADDIE MORRIS  
ASHLEY MORRIS  
VINI MURUGAVEL  
KEIJUAN NEESE  
KINSEY NICHOLSON  
NATALEIGH NIX  
JACK NOEL  
KATHERIN NOTBOHM  
TAYLOR ODOM  
TRINITEE ODOM  
GRACE OWENS  
NANCY PARKER

OLIVIA PATEN  
SAM PENNEBAKER  
BRADY PERMENTER  
ABBY PERRY  
ARIEL PHILLIPS  
SIERRA PHILLIPS  
TAMMY PHILLIPS  
MORGAN PITTMAN  
WENDY POLK  
SHRIYA RAJAN  
ERIC RAND  
WENDY RAVENCRAFT  
JACIRE RED  
MIA REED  
STEPHANIE REMORE  
MARIAN RICHARDSON  
OWEN RIDGEWAY  
WALTERINE ROBINSON  
ALEXIS ROE  
SHAMEKA ROOSEVELT  
JADE ROSS  
KIMBERLY ROSS  
EMMA SAMMONS  
TANYLA SCOTT  
ROSINA SEARS  
MONIQUE SELVY  
KRISTEN SHARP  
MILLS SHERIDAN  
ODONNUS SIMMONS  
JAMES SMITH  
JOSHANA SMITH  
SNACK ZONE  
DAYASIA SNOW  
AVERY STALLINGS  
BRIAN STALLINGS

JASMINE STEWART  
KIMBERLIA STOKES  
MALLORY STRODE  
AIDAN SULLIVAN  
HALLIE SWILLEY  
REBEKAH TATE  
ALEXSUNDRIA THOMAS  
MAKAYLA THOMAS  
TYNESA THOMAS  
STELLA TIPTON  
REBECCA TROWBRIDGE  
HAILEY TURNAGE  
ANNA WADDELL  
CAITLYN WALKER  
JASMINE WALKER  
SAKINA WALKER  
JARRED WARNER  
DOUGLAS WATKINS  
HAILEY WATKINS  
ANGEL WATSON  
STEPHYNE WEATHERSBY  
AISHA WILLIAMS  
DAJIA WILLIAMS  
MADDIE WILLIAMS  
REKIA WILLIAMS  
LAUREN WILLIAMS - RIDDLE  
ZACHARY WILLIS  
ANNETTE WOODARD  
LAYA WYATT  
JT WYNNE  
CASEY YOUNG  
LINDA ZAMPIERI  
ALAYAH ZOLICOFFER

## CANOPY'S WARREN COUNTY CHILDREN'S SHELTER ADVISORY BOARD

SUE BAGBY  
WILLIAM BANKS  
LANE CAMPBELL

ANNE C. COLE  
FRANK C. DANCZYK  
JOHN FERGUSON

ALVIN FOSTER  
FRANK GARDNER  
SKIPPER GUIZERIX

RACHEL HARDY  
BUD HUSTED  
ANNIE JENKINS

GIL G. MARTIN  
MICHAEL MAYFIELD  
MILTON MOORE

KIM NAILOR  
MARTIN PACE  
DONALD ROESCH

PATRICK SMITH  
RICKY SMITH  
LEROY THOMAS

# LOOKING FORWARD, LEANING IN

THE COLLECTIVE EVENTS OF 2020 HAVE SHAPED US IN PROFOUND WAYS, INDIVIDUALLY AND AS AN ORGANIZATION. WE WILL NOT WASTE WHAT WE HAVE LEARNED. AT ONE LEVEL, 2020 UNCOVERED A FRESH REALIZATION OF THE REMARKABLE PRIVILEGE WE HAVE TO STAND IN THE GAP FOR EACH OTHER TO KEEP OUR CANOPY FAMILY SAFE. AT ANOTHER LEVEL, THIS SEASON EXPOSED THE WEIGHTY RESPONSIBILITY THAT RESTS ON CANOPY AS MISSISSIPPI'S LARGEST PROVIDER OF CHILDREN'S BEHAVIORAL HEALTH, EDUCATION AND SOCIAL SERVICE SOLUTIONS TO TAKE BOLD STEPS NOT ONLY TO KEEP OUR CANOPY FAMILY SAFE, BUT ALSO THRIVING!

## IN ONE YEAR WE HAVE:

- advanced a decade in overcoming the stigma of mental health;
- removed access to care barriers through technology;
- seen the education systems look to mental health as the vehicle through which education goals can be attained;
- seen long-standing, ridged public policy become malleable to meet the immediate needs of children and families;
- seen a dedicated workforce rediscover their deeper mission and find a whole new gear of selfless service;
- seen old wounds of racism re-opened and the courageous work of reconciliation move front and center because we believe that relationships matter and our differences make us stronger;
- seen public-private partnerships emerge to reimagine our collective responsibilities for children and families; and
- seen life transformation for over 6,000 children and families that compel us to become more disciplined in our thoughts and actions to create a bright future for generations to come.

Looking forward, we anticipate a tsunami of mental health needs. However, with great need comes great opportunity. Like a snow globe that has been shaken, the homeostasis of our healthcare and mental healthcare systems have been forever disrupted and changed. Now is our time to leverage sound public policy and evidence-based practices to redirect the “snowflakes” in their proper alignment before they settle. Echoing Churchill, “this could be our finest hour!” Now that the limitations imposed by healthcare systems, public policy and best practices of the day have been “shaken”, we see a new era of possibility through telehealth, digital therapeutics, and public-private partnerships being co-created!

As we look around the corner to the new era of healthcare, we do not approach lightly or on our heels, rather we are leaning in. As Peter Drucker put it, “the best – perhaps even the only – way to predict the future is to create it.” This is precisely what you can expect from Canopy as we look forward and lean into the year ahead. We are resolute in our commitment to create a brighter future for children – one in which every child can thrive and be a success story. We cannot achieve this vision without transformational partners who are committed to co-construct this vision together. We look forward to looking forward together!



**CANOPY**  
Children's Solutions

**1465 Lakeland Drive • Jackson, MS 39216**

**P.O. Box 1078 • Jackson, MS 39216**

**601.352.7784 • 800.388.6247**

[mycanopy.org](http://mycanopy.org)

