



2015 ANNUAL OUTCOMES & REPORT

800.388.6247
www.mchscare.org





John Damon, Ph.D.
Chief Executive Officer



“The best way to predict the future is to create it.” - Peter Drucker

Over the past two years, I have had the distinct honor to serve as the President of the National Association for Children’s Behavioral Health in Washington, DC. This has given me a unique, bird’s eye view of the field and the leadership role our state and MCHS have played in shaping and leading the national discussion. An important take-away I have had from this experience has been that today’s rapidly changing healthcare environment requires three distinct, yet complimentary, mindsets.

1. “What” we do is going to change.

Meeting the dire needs of Mississippi’s children requires innovation, leadership, and timely solutions. Children and families face unprecedented challenges in accessing behavioral healthcare services that are timely, coordinated, affordable, and delivered by highly skilled, passionate healthcare professionals. We must respond to the changing needs of our children, families, and staff. Successful service providers must excel in many domains. They must provide excellent care reflective of best practices and be responsive to the voices of multiple stakeholders, including youth, families and funders. They must be visionary, progressive, and accountable. They must value and invest in their employees and set a bar for excellence in all they do. They must be a prominent player in the external environment and be a credible voice in public policy forum. They must remain adaptable to changing requirements, demonstrate program effectiveness and compliance, and demand good information systems. MCHS has set strategic markers to insure it meets and exceeds these requirements.

This year, we have forged strategic new partnerships, taken leadership roles on emerging needs in the state, contributed to the scientific body of knowledge, strengthened our trauma informed care, initiated innovative supervisory training, engaged in emerging and proven evidence-based practices, reorganized to support best practices delivery and growth, diversified our funding base, and competently responded to emerging corporate

compliance best practices. In short, we have remained responsive to the ever-changing healthcare environment.

2. “Why” we do what we do will not change

While a constant state of change remains all around us, some things stay absolute - our mission and our values. While innovative problem solving allows us to quickly meet the needs of our staff and those we serve, our mission and values serve as our unchanging foundation. At every opportunity, we look to find ways to uphold, reinforce, and instill four unchanging values: (1) the **voice** of our children and families always come first; (2) **relationships** matter; (3) we take great **joy** in service to others; and, (4) our families and our communities deserve our **very best**. These are not just words on the back of our name badges; they are unchanging commitments to those we serve.

3. “How” we do what we do will determine our success

“What” we do will continue to change, “why” we do what we do will not, and “how” we go about our work will determine our success. You cannot succeed without executing business “smarts” such as strategic planning, information technology, public relations, best practice models, etc. However, as best-selling business author, Patrick Lencioni says, “being smart is only half of the equation in a successful organization.” We have found that organizational “health” (minimal politics, minimal confusion, high morale, and high productivity) is the multiplier of organizational “smarts.” This year, we have moved with great discipline to: (1) build cohesive teams; (2) create clarity in the organization; (3) reinforce clarity; and, (4) over communicate clarity. We believe that these four strategies will create a healthy organization that promotes transformation for our children and families and creates the kind of work environment our employees look forward to serving in daily.

We may not be able to predict the future of healthcare, but we are hard at work to create one in which children thrive and families overcome extraordinary challenges!

2014

- Year at a Glance -



CLIENTS SERVED 24-HOUR RESIDENTIAL CARE

CARES Center - Jackson	210
South Mississippi Children's Center (SMCC)	130
Transitional Living and Learning Center (TLC)	40
Warren County Children's Shelter (WCCS)	113

AUTISM SERVICES

The Autism Clinic	17
Autism Consultation Services	426
Mississippi Autism Pilot	26

EDUCATIONAL SERVICES

CARES School - Gulfport	37
CARES School - Hattiesburg	49
CARES School - Jackson	53

8,527 Children: 2,776
Family Members: 5,751
INDIVIDUALS SERVED

INTENSIVE IN-HOME SERVICES

Mississippi Youth Programs around the Clock (MYPAC)	588
---	-----

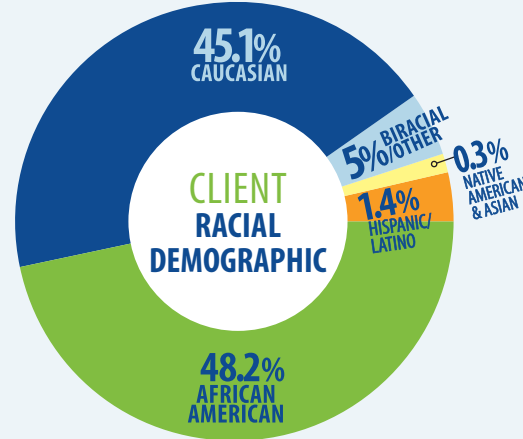
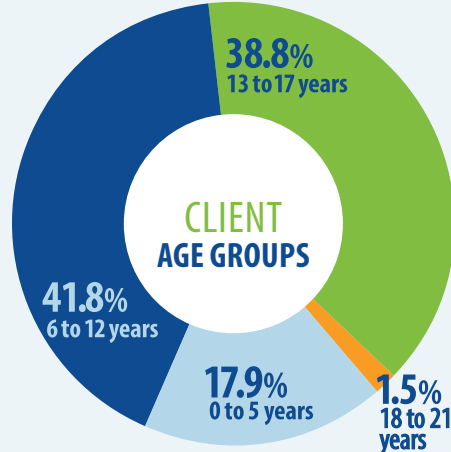
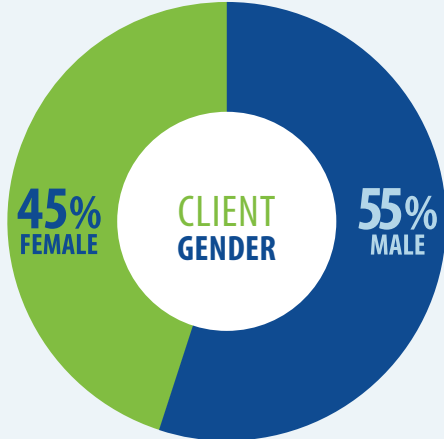
OUTPATIENT BEHAVIORAL HEALTH SERVICES

Behavioral Health Outpatient Clinic	86
-------------------------------------	----

PERMANENCY SERVICES

Adoption/Maternity Services (Children Placed)	2
Adoption/Maternity Services (CFSSP)	45
Comprehensive Family Support Services Program	1,261
Therapeutic Foster Care (TFC)	25

Additional served through Outreach 8,048



89% of kids served in CFFSP were reunified with their families.



94% of kids served in CFFSP were diverted from state custody.



On behalf of the staff and Board of Directors of Mississippi Children's Home Services, we are proud to offer this information about our work over this last year. Many technical terms are used in behavioral health. I think it is critical is to understand what really matters are the children and families who are transformed by our care. Each of these numbers represents a child or family hurting and desperately searching and hoping for help. Every single "outcome" represented here is a special life created with a purpose that is good and noble. We make a real difference in each and every one of these lives. We transform desperate to hopeful. We are thankful for the support and partnership of so many, but there is more work to do for children and families in crisis. Please join me in sharing this story and supporting this great work.

Sherribeth Wright Farmer
President (2013-2015)
Board of Directors



*Board President
Sherribeth Farmer and
CEO John Damon with
Mississippi's First Lady,
Deborah Bryant.*



Board of Directors

2014-2015 Board Officers

- Sherribeth Farmer, **President**
- Alfrado Donelson, **Vice President**
- Lauren Benner, **Secretary**
- Jackie Meck, **Assistant Secretary**
- Barney Daly, **Treasurer**
- Jon-David Johnson, **Assistant Treasurer**

Board Members

- Robert Abney
- Larry Accardi
- Lisa Bemis
- Lauren Benner
- Carol Biedenbarn
- Richard C. Bradley III
- Charlita Cloman
- Helen Dalehite
- Barney Daly
- Alfrado Donelson
- La'Verne Edney
- Sherribeth Farmer
- Bill Grete
- Kevin Hankins
- Jon-David Johnson

- Laurie McRee
- Valarie Mabry
- Brad Maley
- Jackie Meck, Jr.
- Red Moffat
- David Sanders
- Jack Spradling
- Margo Swain
- Dorian Turner
- Bryman Williams
- Stacey Palmer Williams

Honorary Members

- Skipper Jernigan, Jr.
- Auburn Lambeth
- Ben Stone

Mississippi Children's Home Services

Founded 1912

Total MCHS Locations: 21

Including: 12 Community Offices 3 Day School Programs
2 Residential Facilities 2 Emergency Shelters

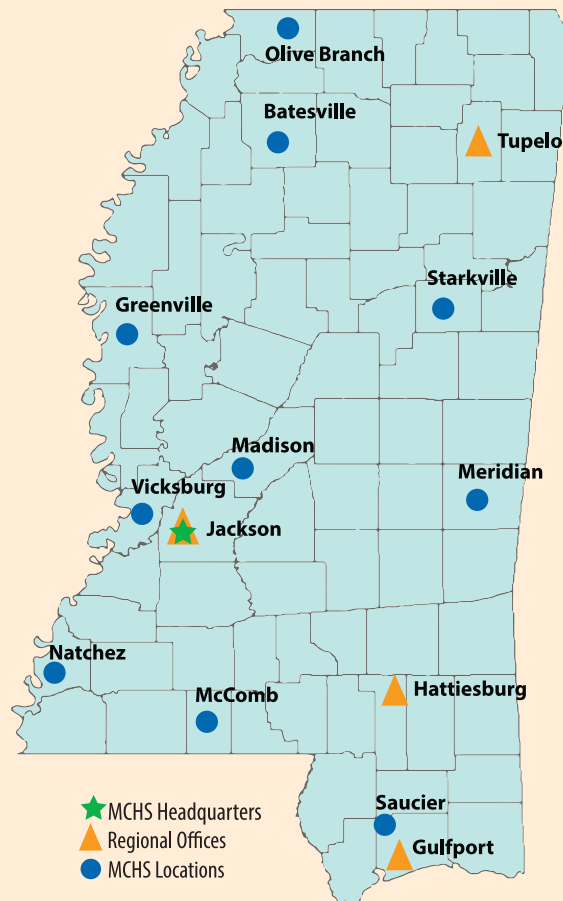
Total Employees: 495

Licensed, Certified, and Accredited by:

- The Joint Commission
- Department of Health and Human Services
- Mississippi Department of Education
- Mississippi Department of Health
- Mississippi Department of Human Services
- Mississippi Department of Mental Health
- Mississippi Division of Medicaid

Primary Funding Sources include:

- Corporate and Foundation Grants
- County Boards of Supervisors
- Department of Health and Human Services
- Mississippi Department of Education
- Mississippi Department of Human Services
- Mississippi Department of Mental Health
- Mississippi Department of Public Safety
- Mississippi Development Authority
- Mississippi Division of Medicaid
- Municipalities
- Program Service Fees
- Private Donations
- United Way



100% of WCCS

clients had a plan to help to keep them safe after leaving the shelter.



100% of CARES

Center's client's families would seek help from CARES Center for their child in the future.



Statewide Program Guide

Mississippi Children's Home Services provides a continuum of **behavioral health, educational and social services** for children and families.

AUTISM SERVICES

The Autism Clinic (Madison)

Clinical Services: The Autism Clinic specializes in providing individualized Applied Behavioral Analysis (ABA) services, an evidence based practice that focuses on behaviors for children on the autism spectrum. They also help families learn how to reinforce these processes at home.

Early Intervention Services: The Autism Clinic provides early intervention and ongoing assessment to children ages 18 months to 8 years old with an autism spectrum disorder (ASD). MCHS also provides an early intervention

pilot program through a partnership with the Mississippi Department of Medicaid.

Consultation Services: MCHS offers ASD consultation in public and private schools.

Day School Programs: Each CARES School provides specialized classrooms for children on the autism spectrum. (Gulfport, Hattiesburg, Jackson)

CRISIS SERVICES

Child Advocacy Center (Gulfport) - The Child Advocacy Center offers comprehensive case management to child victims and their families involved in the court system. Case managers refer clients to appropriate community resources including legal, mental, health, and medical. All clients receive support and guidance throughout their involvement in the judicial process. **This project is supported by Child Abuse Prevention Center Fund, a Fund of the Gulf Coast Community Foundation.**

South Mississippi Children's Center - The

South Mississippi Children's Center (SMCC) is a 12-bed coeducational, diagnostic and evaluation shelter. SMCC operates a runaway and homeless youth program, as well as a diagnostic and evaluation shelter program for youth ages 9 to 17.

Warren County Children's Shelter - The

Warren County Children's Shelter (WCCS) is a 12-bed coeducational diagnostic and evaluation shelter serving ages birth to 17. The shelter has a runaway and homeless youth program component.

EDUCATIONAL SERVICES

CARES School Program (Gulfport, Hattiesburg, Jackson) - The CARES Day School is an accredited, non-public, special purpose school designed to meet the educational and behavioral needs of students whose behavior prohibits participation in the public school setting. The CARES School provides quality individualized education that meets the needs of each individual student. Each CARES School also offers specialized classrooms and consultations for children on the Autism Spectrum.

I truly appreciate every therapist that has worked with my child. Each one shows genuine concern for my child.

- Autism Program family member

*The **VOICE** of our children and families always comes first*



FAMILY PERMANENCY SERVICES

Adoption and Maternity Services

For more than 100 years, MCHS has been committed to finding forever families for children through our adoption program. Our work with families includes providing home studies, post-placement supervision and emotional support throughout the adoption process. MCHS also provides search and reunion services for adoptees.

Comprehensive Family Support Services Program

- The Comprehensive Family Support Services Program (CFSSP) is a unique service designed to promote timely family reunification or family preservation for children and youth in crisis. The focus of this program is to keep families together and to reunite children in state custody with their families. CFSSP is a service of the MS Department of Human Services, Division of Family and Children's Services.

Therapeutic Foster Care - The Therapeutic Foster Care (TFC) Program provides a therapeutic, caring environment in the context of a nurturing foster family home. Any child entering our care is supported in reaching his or her permanency plan, whether that is reunification with the family, adoption, permanent foster/kinship care, or independent living. Each child is supported by a TFC therapist, and our foster parents receive extensive training to ensure that each child is

given the opportunity to succeed at home, in school, and in the community.

INTENSIVE IN-HOME SERVICES

Mississippi Youth Programs Around the Clock - Mississippi Youth Programs Around the Clock (MYPAC) is a home and community-based program that provides parents with a community-based alternative to psychiatric residential services for youth with serious emotional disturbances. MYPAC is provided in a partnership with MS Department of Medicaid.

OUTPATIENT SERVICES

Behavioral Health Outpatient Clinic

The Behavioral Health Outpatient Clinic serves children and youth up to age 21 years old with individual and family therapies. Providing access to evaluations, individual and family therapy, crisis prevention, and psychiatric services, the Clinic has a wide range of outpatient services. MCHS offers flexible scheduling for children and families. We accept most major health insurance plans and Medicaid.

Therapeutic Day Treatment Program

(Jackson) - The Therapeutic Day Treatment Program is for children who are struggling to maintain appropriate participation in traditional school setting due to behavioral or emotional problems. Diagnoses may include adjustment disorder, ADHD, oppositional defiant disorder, PTSD

and other disruptive behavioral disorders. Treatment is provided in an after-school setting.

Therapeutic Preschool Day Treatment Program

(Natchez) - The Therapeutic Preschool Day Treatment Program provides therapeutic treatment for children ages 4 to 5 years old who cannot participate in a traditional preschool/day care due to behavioral or emotional problems. Diagnoses may include reactive attachment disorder, ADHD, oppositional defiant disorder, PTSD and other disruptive behavioral disorders.

RESIDENTIAL SERVICES

The CARES Center (Gulf Coast, Jackson) - The CARES Center is a private, nonprofit psychiatric residential treatment center for children and adolescents with severe emotional and/or behavioral disturbances. Our 60-bed facility, located in Jackson, provides services for ages 6 – 17. Our 20-bed facility on the Gulf Coast provides services for ages 13-17. Comprehensive services include intensive individual, group, and family therapy; medical services; therapeutic recreation and education services; and social skills training. Children residing in the CARES Center attend the CARES School located on-site.

100% of MCHS's referral sources feel MCHS is known for its integrity and ethical practices.



100% of CARES School students' families feel staff is respectful.



Santa spreading Christmas joy to our children on our Bagley Campus

Helping Us Transform Lives Volunteers, Auxiliary, and Advisory Boards

*By volunteering time and talents to MCHS, you are helping transform the lives of thousands of children in Mississippi. Whether it is reading to our children at Christmas, hosting a monthly birthday party, or serving a special lunch to our kids and staff, each volunteer is exemplifying the core value of **joy in service**.*

We always welcome volunteers. If you or your organization would like to volunteer with MCHS, please contact 601-352-7784.



Junior League of Jackson accepting the 2014 Chrysalis Award with First Lady Deborah Bryant.

INDIVIDUALS & ORGANIZATIONS

AmeriCorps
 Ameristar Casino
 McKenzie Amis
 Judy Sudduth-Bain
 Lindsey Brown
 First Lady Deborah Bryant
 Blue Cross & Blue Shield of Mississippi Team Blue
 Tameka Buck
 Gerry Clark
 Flowers by Mary
 Dwayne Fuller
 Lisa Fuller
 Sydney Gardner
 Germantown High School Student Council
 Grace Bible College
 C. E. Grace Photography, LLC
 Hinds Community College Football Team
 Holmes Community College Nursing Program
 Kristi and Vince Herrin
 Jackson Lions Club

Jackson State University Alumni - Kappa Alpha Psi Fraternity
 Jackson State University Students
 Aboye Jinkiri
 Ronnie Johnston
 Tommy Keen (Santa-T)
 Junior League of Jackson
 Knights of Columbus Council 9543
 Stefani Leo
 Venecca Mason, Esq.
 Milsaps College Students, Faith and Works
 Ed Marsalis
 Melanie McEwen
 Millsaps College - Volleyball Team
 Mississippi College Physician Assistant Program Students
 Mississippi State Treasurer
 NDJ Entertainment, Inc.
 Ken North
 Oakdale Baptist Church
 Pampered Princess
 Parent & Kids Magazine
 Jill Pierce



Members of our Jackson Auxiliary

Protel, Inc.
 Puckett Serves
 Alana Riptoe, Reach for Kids
 Mike Robertson
 Rotary Club of Jackson
 Angie Smith
 Jared Tomlinson
 University of MS Medical Center - School of Dental Hygiene
 Tunney Vandevender
 Shannon Warnock
 Antwan and Dwiki Wilson
 Amanda Woodruff



CHILD ADVOCACY CENTER

BOARD

Jim Allen
Scott Allen
John Blake
Jerry Bracey
Mary Bui
Derek Cusic
Paula Lee
Rebecca Payne
Richard Strebeck
Cindy Webb

JACKSON AUXILIARY

OFFICERS

Sonja Barnes, *President*
Katie Sanders, *Secretary*

MEMBERS

Kathy Accardi
Chelye Amis
Lauren Benner
Missy Black
Lana Boyll
Tracy Burleigh
Danielle Correro
Anne Daly
Sheryl Escude'
Kathy Eure
Haley Fowler
Yotunga Grant

Neva Greenwald
Victoria Johnson
Angela Jones
Abbie Koonce
Stephanie Leo
Kristin Malouf
Donna McCarthy
Yolanda McElroy
Lawana McLennan
Carly McRee
Victoria Montgomery
Gina Mulholland
Amanda Puckett
Lisa Purdie
Marci Robertson
Dana Robertson
Sharolyn Smith
Vikki Taylor
Adrien Travis
Paulette Ware



SOUTH MISSISSIPPI CHILDREN'S CENTER

ADVISORY BOARD

Heidi Hackbarth, *President*
Althea Jerome, *Recording Secretary*

MEMBERS

Sam Buchanan
Leigh Baugh
Tanjanaya Clark
Sarah Erwin
Deborah Franzen
Kim Fountain
Vanessa McLellan
Jeanie Munn
Lloyd Munn
Julie Perrigin

WARREN COUNTY CHILDREN'S SHELTER

ADVISORY BOARD

Sue Bagby
William Banks
Easy Biedenarn
Lane Campbell
Anne Cole
John Ferguson
Skipper Guizerix
Jeanine Hanks
Rachel Hardy
Annie Jenkins
Elijah Johnson
Gil Martin
Michael Mayfield
Tami Milazzo
Bill Nichols
Marie Thompson



AmeriCorps volunteers make repairs and paint at WCCS.



Ms. Ruth Lester, a foster grandparent volunteer at SMCC

The Blue Cross & Blue Shield of Mississippi Team Blue helped our kids learn how to have fun and be active.

Transforming Lives



93% of MCHS expenses go towards the programs that transform children's lives - Mississippi Secretary of State

Mississippi Children's Home Services and Affiliates Consolidated Statement of Activities*

Year ended December 31, 2014

Unrestricted net assets

Support and Revenue

Government Agencies	\$26,193,033
Contributions - United Way	380,740
Program fees	963,178
Contributions - Other and Special Events	841,537
Interest and Dividends	35,804
Rental Income	125,959
Net Assets released from restrictions	766,525
Other	263,548

TOTAL SUPPORT AND REVENUE \$29,570,324

*Excerpt from Audit

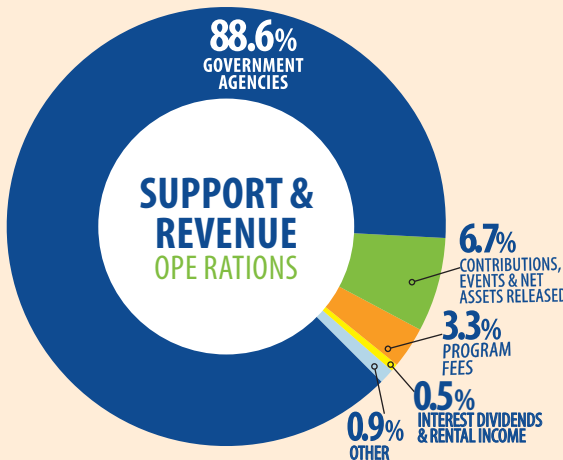
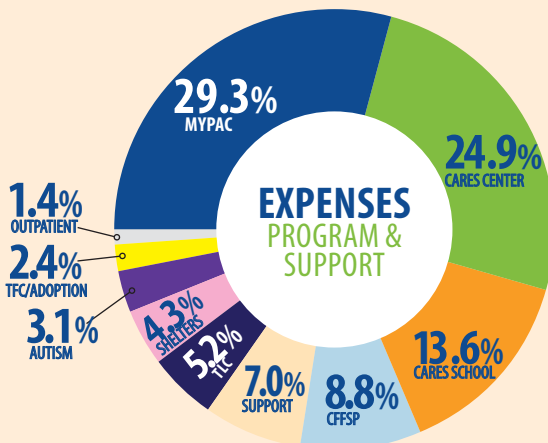
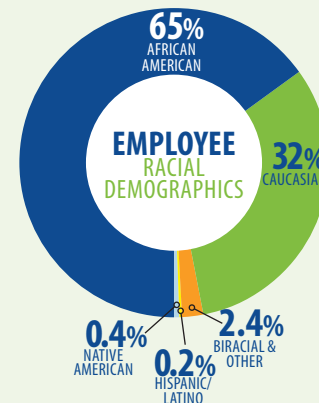
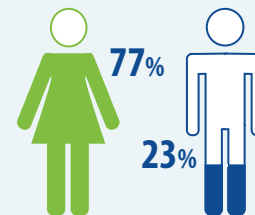
Expenses

Salaries	\$17,450,872
Payroll Taxes & Benefits	3,547,722
Professional Fees	2,150,799
Program Supplies	970,038
Other Operating	502,023
Travel and auto expense	1,207,914
Occupancy	1,625,486
Rental & Maintenance	101,674
Insurance	278,141
Bad Debt Expense	342,513
Depreciation	1,184,803

TOTAL EXPENSES \$29,361,985

Increase in unrestricted net assets 208,339

495 Employees work at MCHS



\$30.6M economic impact to Mississippi

\$21M - salaries/taxes
\$1.6M - property rent/taxes
\$8M - vendor payments

RELATIONSHIPS matter

Our Community of Support

Thank you to the following individuals, corporations and foundations for the support to transform children's lives!

1912 Society

(Planned or Deferred Gifts)

Carol A. Biedenbarn
Mr. and Mrs. George Gunn
JEBCA
Mrs. John Keeton
Jack Spradling

Children's Champion

(\$100,000 or more)

William Cannady III
Gertrude C. Ford Foundation

RV Powers Society

(\$25,000 - \$99,999)

Faith Hill & Tim McGraw, Neighbor's
Keepers Advised Fund of the
Community Foundation of Middle
Tennessee

Madison Charitable Foundation
The H. F. McCarty, Jr. Family Foundation
Selby & Richard McRae Foundation
Wal-Mart Foundation

Thomas Gale Society

(\$10,000 - \$24,999)

Bob and Kay Abney
J. W. Bagley Foundation
BankPlus
Carol A. Biedenbarn
Entergy Charitable Foundation
Feild Co-Operative Association, INC.
Laurie H. McRee
Keeton Family Foundation
Rite Aid Foundation Kid Cents
Wellington Associates, Inc

Benefactors Circle

(\$5,000 - \$9,999)

Larry and Kathy Accardi
The Better Life Foundation, Inc.
C Spire Wireless
John and Leslie Dane
The Fountain Family Foundation
Hattiesburg Area Association of Realtors
Hattiesburgers In Paradise
Nissan North America, Inc.
Margaret E. Swain
Dorian E. Turner
Trustmark National Bank - Jackson

Chrysalis Circle

(\$2,500 - \$4,999)

BancorpSouth
Crossway Church
Herman and Shelia Crowder
John and Helaina Damon
Graeber Foundation
Joan Marie Kaye
Bryan Nelson P.A.
Paul and Jill Pierce
Puckett Machinery
Stuart C. Irby Company
Tarver Foundation

Patrons Circle (\$1,000-\$2,499)

Mark and Tammy Amis
Adams and Reese, LLP
American Equity Investment Life Ins. Co
Ameristar Casino Vicksburg, Inc.
Ormand Austin
Cathie J. Bailey
Guy and Lana Boyll

A. P. and Lisa Busby
Canizaro Cawthon Davis
Architecture Planning Interior
Design
Carr, Riggs & Ingram, LLC
ChemFirst Inc.
Helen L. Dalehite
Alfrado and Shirley Donelson
Larry W. and Pamela B. Edwards
Charitable Fund
Randy and Kathy Eure
Elmer & Gladys Ferguson Charitable
Trust
Forrest General Hospital
Lisa Fuller
Golding Barge Line, Inc.
Terry and Stacey Hight
James E. Fowler Family Foundation
Margaret Keeton
Lady Luck Casino
Loyal Order of Moose 1581
Jon and Valarie Mabry
Tim and Cynthia Mahaffey
Fred and Barbara McDonnell
Paul McNeill
Jackie and Shani Meck
MS Association of Women Dentists
Red and Helen Moffat
Mutual Credit Union
Porter & Malouf, Law Firm
Regions
Resource Development, LLC
Arthur and Carole Ring
Ross & Yerger Insurance, Inc.

This list reflects gifts made between January 1 and December 31, 2014. Every effort has been made to ensure accuracy.

Sonya P. Sanderson
Robert D. Sanders Foundation
Jim and Debbie Sones
Southern Healthcare Agency, Inc.
St. Dominic Health Services, Inc.
Wayne and Angie Sumrall
Dean and Stephanie Tanner
The Wesley A Caldwell Foundation
James Thomas
Thompson and Associates, LLC
Bill and Nina Tomlinson
UMMC Medical Student Family Alliance
United Way of Metropolitan Nashville
Van Devender Family Foundation
D. J. and Heather Wagner
Christopher L. and Allison Westervelt
Westminster Presbyterian Church
Winans Trust
Wise Carter Child & Caraway
Sam E. and Burnice C. Wittel Foundation
WME Applied Systems, LLC

Stewards (\$500-\$999)

David and Arin Adkins
Advanced Collision
James P. and Suzanne Almas
Anonymous
AT&T United Way Employee Giving
Campaign
Centene Management Company LLC
Children's Charitable Services
CoatTails
Community Trust Bank
Anne C. Cole
Barney and Patti Daly
Stephanie Daniel's Sunday School
Class
Thomas and Margaret Dews
Elk's Lodge No. 95 BPOE
Craig and Sherribeth Farmer
G & H Medical LLC
Good Hope Baptist Church
Neva Greenwald



100% of the Autism Clinic families have been taught ways to help their child.



100% of Autism Clinic families feel comfortable discussing their child's treatment with staff.



I like how my concerns are listened to and addressed in each session. - A parent of a Behavioral Health Clinic client

Kim W. Hoover
 Billy and Jacqueline Horne
 Horne LLP
 The Insurance Mart, Inc
 The Ironman Foundation, Inc.
 JD Johnson Realty & Investment
 Bettie Ruth Johnson
 Junior Auxiliary of Hattiesburg
 Patrick and Kristin Malouf
 James A. and Tammie McCullough
 Scott and Vanessa McLellan
 Jackie D. McMillan

Gwen Winters
 Debbie Young
 Younger Foundation
Friends (up to \$500)
 ABATE of MS Vicksburg Chapter
 ADA Lauderdale Insurance Agency
 Amy Adams
 Nelly Alfrey
 Allein Bible Class
 Bret Allen
 Robert and Angela Allred



Ken Hall and Cherri Barnett
 Kenny and Jana Barraza
 Ron and Janet Bathurst
 Brittany Bell
 Mike and Lisa Bemis
 Frank and Lauren Benner
 Dee Betz
 Joel and Tracy Bianchi
 D. C. Black Jr.
 Wes and Missy Black
 Blue Cross & Blue Shield of Mississippi Foundation
 Elaine Bond
 Michael Booner
 Michael and Ashley Borne
 Bovina Grocery
 Lucretia Bowman
 Ralph and Judy Boykin
 Durr and Robin Boyles
 Michael and Jennifer Bracken
 Tricia Bradford
 Rick and Mimi Bradley
 Ladd and Sheila Bratcher
 Bravo Italian Restaurant & Bar
 Breese Law Office PLLC
 Brenda FBO Power & Telephone Supply Co. Gatlin
 Arthur and Rebecca B. Bressler
 Pam Brewer
 Martha J. Bright
 Thomas and Lynne Brister
 William and Betty Britt
 Broad Street Baking Company
 Jason T. and Christy Brooks
 Todd and Debbie Brooks
 Sam and Tab Buchanan
 Tondre and Tameka Buck
 Henry D. Bufkin
 Mary K. Burge
 Pam Burgess
 Bob and Jo Ann Burke

Phillip and Anna J. Burnette, Jr.
 David A. Bush
 William and Amy Bush
 John and Lind Busy
 Bee MHV Club
 Robert and Donna Kaye Byrd
 C.L. Dews & Sons Foundry & Machinery Co. Inc.
 Benton Cain
 Calvert-Spradling Engineers, Inc.
 Cannon Toyota
 Russell and Carla Carlisle
 Bert and Jamie Carpenter
 Santa W. Carpenter
 Ben and Mary Cason
 Gregory D. Cawthon
 Charlie Jones Financial Services
 Christopher M. and Sue Cherney
 James and Joan Cheroni
 Choices, PLLC
 Christ Episcopal Church
 R. R. Cirilli, Jr.
 City of Vicksburg
 Anita Clark
 John and Janet Clark
 Billy Cochran
 Community Bank
 A. W. and Frances B. Conerly
 John and Leah Cook
 James Corbett
 Chris and Danielle Corro
 Paul and Lou Ann Cotton
 Tommy and Tiffany Couch
 COV Co Homemaker Volunteers
 Steven and Peggy Cox
 Wade and Betsy Creekmore
 The Cress Group LLC
 Holt and Sidney Crews
 Johnny and Theresa Crisler
 Crossgates Veterinary Clinic
 Custom Flooring, LLC

The Daily Gift
 William M. Dalehite, Jr.
 Shay and Anne Daly
 Dan's Services
 Charles M. Dawe
 Charles and Pat Decker
 Delta Telephone Company
 Department of Mental Health
 DiamondJacks
 Charles M. and Shelia R. Dick
 Ann DiFranco
 DIMCO, Inc.
 The Doctors Company
 Billy and Joan Dodd
 William and Frances Doherty
 Andrew and Deborah Donahoe
 Doughboy's Handyman Service
 Robert Duda
 Bob and Mary Lynn Dunaway
 Durst Discount Drugs Inc. Store No. 2
 Rick and Emily Dye
 Honey East
 John and Sherri Eiland
 David Elkin
 Kaitlyn Ellis
 Eduardo Enamorado
 Zachary and Sarah Erwin
 Mark and Sheryl Escude'
 Domenic and Susan H. Esposito
 Harold and Rachel Evans
 John D. Fagen
 Fred and Kay Farrell
 First Pentecostal Church of Georgetown, Inc.
 First Presbyterian Church
 First State Bank
 The FIRST National Bank
 Harvey and Nell Fitzpatrick
 John M. Fitzpatrick
 Representative Flaggs
 Ray and Bette J. Flowers

We take great JOY in service to others

Richard and Kay McRee
 Metro Communications, Inc.
 Charles Mullins
 Nicholson & Company, PLLC
 Nix-Tann & Associates
 Outlets of Mississippi
 Richard and Sherry Patridge
 Jeff and Melinda Peoples
 Kris and Amanda Powell
 George Ready
 James and Betty Roy
 Splendid Destinations Travel
 St. Martin Baptist Fellowship
 John and Vikki Taylor
 Whitehall Trust

AmazonSmile Foundation
 AmFed Insurance Services, LLC
 Steve and Chelye Amis
 Arleen Anderson
 Matt and Tyler Armstrong
 Camille Atwood
 Derrick P. Autmon
 Automotive Glass Specialist
 Horace H. and Sandra Baggett
 Robert Bailess
 Dolph and Dea Dea Baker
 Bank of Morton
 Bryan and Jane Anna Barksdale
 Cornelius Barnes
 Marty and Sonja Barnes



Howard Greer
Guaranty Bank
& Trust Company
George and
Robin Gunn
Michael and
Donna Gunter
Heidi Hackbarth
Halford
Insurance
Agency, INC.

Cliff and Janie Hamilton
Kenneth Hardman
Mark and Rachel Hardy
Clyde and Barbara Hare
Glenn T. Harper
Gregg and Sidney Harper
William Harrell
Ed and Patsy Harris
Cherie Hart
Kenneth and Pat Hartley
Hawkins United Methodist Church
Women
Hayneville Telephone Company, Inc.
James and Preston Hays
Robert and Christine Heath
Helen's Florist
Helping Hand Family Pharmacy
Hennessey, Thames & Leavitt
Insurance Agency, Inc.
Heritage House Interiors
Herman and Sharon Herrin
Mary Herrington
Gregory and Brianne Herrman
James Hicks
John and Anna Hight
B. W. and Ruth Hill
John and Marie Hill
Larry and Annette Hill
Tommy and Heather Hixon
Heyward and Loicka Hodges

Lomax Floyd
James D. Fly
Danny M. Fontenot
Hunter L. and Sarah Fordice
Haley Fowler
Frances Hathorn Circle
Frank G. Vollar Attorney At Law PLLC
Michael and Allison Freeman
French Awning & Screen Co.
Beth S. Frizsell
Larry Frost
Norma J. Fulcher
Teresa Funderburke
Charles and Julie Galloway
Joey Garner
Jesse Garrett
Stuart Gates
Gregory Giddens
Bobby and Christine Gill
Chad and Dawn Gnam
Sid Gonsoulin
David and Jordan Goodwin
D. C. Graham
Maria Graham
Yotunga Grant
James and Tiffany Graves
Danny and Lisa Gray
Greater Mississippi Combined
Federal Campaign
Homer Greer

Amanda Holder
Home Bank
Hometown Medical LLC
Carol Hood
Oliver H. Hopkins
Anita Hossley
Doug and Cathy Hudgins
Michelle Hudson
William and Glenda Huff Sr.
Dan C. Hughes, Jr.
Haden and Tish Hughes
Stanley and Glenda Hughes
Loretta W. Hulin
Hubert and Janice Hunter
International Investments Inc.
International Paper
J&R Restaurant Group, INC
Annie Jackson
Brian Jackson
Jerry and Jackie Jackson
Thomas and Natalie James
Kenny and Cheryl Jeanes
Bueford and Loucinda Jenkins
Raoul and Althea Jerome
Richard and Kaye Jimenez
Victoria Johnson
Charlie and Angela Jones
Jamie Jones
Jones & Upchurch, Inc. Real Estate
Agency
Marianne Jones
Junior Auxiliary of Vicksburg
Brendan Kennelly
Gerald Keyes
David and Stacy Kilcoyne
Mary H. Kilgore
William and Margaret Kilgore
The Kitchen Table
Rosalie Knop
Christian Koch
Caleb and Abbie Koonce

Kroger Community Rewards
Mike and Carol Krupa
Mark Kubicki
Vincent and Joanna Kuhn
Claire Ladnier
Auburn and Linda Lambeth
Dewey H. Lane
Sara Laura
Jacqueline Lee
Jerry and Phylliss Lee
Stefanie C. Leo
Joseph and Renee Lichtenhan
Bernard and Eloise Lide
Steven and Elizabeth Lindsay
William and Betty Longo
Glorie N. Lorio
John and Julie Lott
Mary L. Lott
Johnny and Peggy Louis
Anne Lovelady
Patricia Lumpkin
Richard and Amy Lynn
M N M Enterprises, LLC
MACC
Joe and Sherry Magee
Charles and Hilda E. Magers
Magnolia Mini Storage, LLC
Eddie and Rhoda Maloney
Larry and Luanne Manwaring
G. G. Martin
Chris and Lucy Mauldin
May & Company
Maynard Landscaping
McArthur, Thames, Slay & Dews, PLLC
Debbie McCall
Jay and Donna McCarthy
Jessica McCarthy
Kevin McCormick
Mark and Sharon McCreery
Kent McDaniel
Stephanie N. McGee

Martha McKay
Roger and Jean McKay
Peggy McLean
Devere and Lawana McLennan
Carroll and Lorie B. McLeod
Stephen and Sandra McManus
Neil and Beverly McMillen
Medley & Brown
George J. Michael
Michael Bonner Law Firm
Midsouth Generator LLC
Glen and Claudia Millis
Richard and Sylvia Mills
Brian and Becky Milner
MS Federation of Women's Clubs
Armin J. and Jan Moeller
Jim and Janet Moffat
Buddy Montgomery
Victoria Montgomery
Morgan Stanley
Larry and Janiece Morris
William Mosby
Wilma E. Mosley-Clopton
Angela Moudy
David and Gina Mulholland
Newell R. Murphy, Jr.
Ira and Tracy Murray
Eddie and Kathy Myers
Sylvia Neal
Bill and Susan Nichols
Jerry and Myrna Nickens
John Nissenbaum
NKS Gulfport, LLC
Don and Holley Noblitt
W. D. and Edwina Norris
Nora N. Novak
Bronwyn S. O'Dell
Optimist Club of Vicksburg
David M. Ott
Jacque Pace
Tom and Gayle Papa

**100% of Behavioral
Health Clinic
Families have been
taught better ways to
help their child.**



**100% of Behavioral
Health Clinic Clients
feel staff treat them
with respect.**



MYPAC has really helped our family. - A parent of a MYPAC client

Our families and our communities deserve our VERY BEST

Geraldine Parish
Jim and Gwenda Patton
James A. Peden Jr.
Pelahatchie United Methodist Women's Group
Danny and Elizabeth Perrett
Penny Perrett
Julie Perrigin
Edith L. Perry
William Peters
Philip's Building Supply
Wiley and Ann Phillely
J. S. and Velda Phillips
Pine Belt Federal Credit Union
Pine Belt Oil Co., Inc.
Jessica Pittman
Patrick and Glenda Pittman
Robert and Patricia Murphy
Francis and Sandra Polanski
Poly Pharmaceuticals, Inc.
Sam and Holly Porter
Glenda Prescott
Gloria K. Pressgove
Gloria Preston
Buddy Prestridge
Hastings and Amanda Puckett
Alan and Lisa Purdie
Lamar Puryear
Michael and Ginger Ray
Redwood Methodist Church
Rehobeth Methodist Church
Daniel Renfro
River Hills Club of Jackson Inc
River Region Medical Center
River Hills Bank
Lera Roark
Alvin and Susan McLendon
Simmie Roberts
Bill and Dana Robertson
Scott and Marcie Robertson
Robin Wentworth Organizational Excellence

Rocky Mountain Chocolate Factory
Douglas and Sandra Rogers
Martha J. Rogers
Jack E. Ross
Elvira Rouse
William L. Rushing
Butch and Anne Russum
Amber K. Rutland
Ryan Chevrolet
Stephen and Carolyn Sachs
Sake Cafe
Sal & Mookie's
Chuck and Corinne Sampson
Katie Sanders
Gail R. Savage
Alan and Gloria Senter
J. P. Shackelford
Sam Shemper
Signal Telcom Partners, LLC
Tommy and Jill Siler
Anna Simmons
Simmons Lawn Services
Doug and Judith Simpson
Larry and Dianne Singley
Vicki R. Slater
Shannon Smith
Sutter and Sharolyn Smith
Smithville Telephone Company, Inc.
SML Real Estate LLC
Southerland and Southerland, PLLC
Southern Bone & Joint Specialist, P.A.
Tom and Elizabeth Speed
Paul and Maureen Speyerer
The Sports Center Vicksburg, LLC
Jack and Judy Spradling
St. Francis of Assisi Catholic Church
Mark Standberry
Geraldine D. Stoll
Nancy and Ben Stone
Floyd and Bean Sulser
Ashley Sumrall

Taggart, Rimes & Graham, PLLC
Marcia L. Tambellini
Hoyt and Dawn Tanner
Thomas W. Tardy III
John T. Tate
Richard and Vicki Taylor
Telecommunications Association of the Southeast
Carlyton and Danyella Terrell
Albert and Evelyn Terry
Therapeutic Solutions
Herman and Shirley Tillman
Ancel Hines
Tammy Torrey
Donald G. and Charlotte Townsend
Adrien D. and Adrian V. Travis
Marcus Treadway, Jr.
Trustmark National Bank - Vicksburg
Davey and Sandra Tucker
Richard Tucker
Len and Ann Turner
Karla S. Tye
United Way of Jackson & George Counties
United Way of South Mississippi
United Way of the Capital Area
Hank Vann
Verisk Matching Gifts Program
Vicksburg Convention Center and Vicksburg Auditorium
Vicksburg Elks Lodge No. 95 "Does"
Vicksburg Family Dental
Vicksburg Warren School District
Stephen E. Wagner
Joe and Linda Walker
Tommie and Merlene Walker
W. E. Walker
William and Sally Walker
William and Charlotte Waller, Jr.
Cynthia B. Warner
Chris and Rebecca R. Waterer

Roger Wayne and Paula Lee
Benjamin and Jennifer Weber
Shirley Weidman
Terry P. Weill
Calvin and Cheryl Wells
Wesley B. Jones Electric Company
Debbie M. Westbrook
Wheelless, Shapple, Bailess & Rector Attorneys at Law
Guy and Allison White
Beau and Marjorie Whittington
Quentin and Ginger Whitwell
George and Brenda Williams
Michael and Stacy Williams
Ed and Jessie Williamson
Donny and Leslie Wilson
Kenny and Trish Windham
Michael and Cynthia Winkelmann
Wirt A. Yerger, Jr. Foundation, Inc.
Susan Womack
Women of the Moose, Chapter 2242
William and Sondra Wooten
Wynndale Lake Civic Association
Yazoo River Towing, Inc.
W. S. Yerger
Hansell N. and Myra York

In-Kind Donors

4450
Robert and Kay Abney
After Five Designs
Albritton's Jewelry
All Things Possible Ministries
Amy Elizabeth Collection
Amy Head Cosmetics
Anderson Design Center
Apple Annie's Gift Shop
At West End
Awakening
b. Fine Art Jewelry
Babalu Tacos & Tapas
Horace and Sandra Baggett
Adolphus and Dea Dea Baker

Jodie Ball
Batte Bridal Registry
Baxter Wilson
Beagle Bagel Cafe'
Beau Rivage
Sarah Beaugez
Frank and Lauren Benner
Big Canoe Rental Tree Topper Chalet
Bike Crossing
Batte Furniture & Interiors
Ebony Bingham
Kirstie Black
Blackledge Face Center
Blithe & Vine
Blooms - A Garden Shop
Blue South Entertainment
Bookland
Books A Million
Lisa Bradley
Bravo Italian Restaurant & Bar
Breeze Airbrush Tanning and Day Spa
Briarwood Mart Package Wine & Spirits
Gene and Peggy Brown
Dede Brunson
Budget Office Furniture
Buffalo Peak
Tommy Burnham
C Spire Wireless
C.L. Dews & Sons Foundry & Machinery Co. Inc.
Calistoga Wine & Spirits
Callaway's Yard & Garden
Calypto Jo's Hair & Tan
David Cameron
Canebrake Country Club
Carr, Riggs & Ingram, LLC
CasaBella Interiors & Gifts
Barbara Cashman
Cerami's Italian Restaurant
Chad Mars, LLC
Chandler's Studio
Tracy Chaney
Char Restaurant
Church of Christ
Clear Channel
Client 1st Advisory Group

Jan Cohn
 Colony Wine Market
 Columbia Auction Company
 Conestoga Steakhouse
 Cookin Up a Storm
 Kenneth J. Coreno
 Corkscrew Fine Wine & Spirits
 Court Street United Methodist
 COV Co Homemaker Volunteers
 Cowboy Maloney's
 Coxwell & Associates, PLLC
 Creative Bites by Candace
 Crossroads Film Festival
 Loye Cunningham
 Curves

Sarah Flagg
 Fly Boutique
 Foam Packaging
 Fondren Cellars
 Forman Perry Watkins Krutz & Tardy, LLP
 Forward Health Solutions
 Rod and Betty Lynn Freeman
 Fresh Cut Catering & Floral
 Fresh Ink
 Front St. Salon
 Lance Gammill
 Germantown Wine & Spirits
 Beth Geter
 Girl Scout Troop #3417

Healing Touch Day Spa
 Heaven's Cakes and Catering
 Hemline Ridgeland
 High Cotton
 Highland Village
 Heather Hines
 Denise Hogan
 Jimmy and Susan House
 Hub City Spokes
 Hybrid Plastics
 Impact of Hattiesburg
 Imperial Palace Casino Resort Spa
 India Association of Mississippi
 Beth Geter
 International Ballet Competition
 Island Rays
 It's Only Natural
 Meg Ivey
 Jackson Country Club
 James Channel Salon & Spa
 Richard and Kaye Jimenez
 Alicia Johnson
 Beth Jones
 Jo's Diner
 Juicy Drama
 Julep
 Juniker Jewelry Company
 Kats Wine Cellar
 Greta Kemp
 The Kitchen Table
 Holly J. Klaas
 Kosmos Salon
 KPMG LLP
 Kristo's Greek Dining
 Krutz Family Cellars, LLC
 Lady Luck Casino
 Lakeland Presbyterian Church
 Lamar Signs
 Amanda Lamb
 Lar'Jes
 Latitudes
 LB Designs
 John W. Lee
 Kathryn Lewis
 Lincoln Road Package Store
 Little Tokyo Restaurant

Jimmy D. Lott
 Adrianna Louie
 The Lucky Rabbit
 Luxe Nail Salon
 Lynn Lamp Art & Decor
 Madison Cellars
 Madison Fireplace and Patio
 Magnolia Market
 Maison Weiss
 Patrick and Kristin Malouf
 Mars Marketing
 Lindsey Martin
 Massage Envy Spa
 Material Girls
 Debbie McCall
 McDade's Grocery
 McKenzie's on Main
 Scott and Vanessa McLellan
 Kerk and Elizabeth Mehrle
 Mint the Restaurant
 Mississippi Children's Museum
 MS Museum of Natural Science
 Mississippi Music Inc. - Hattiesburg
 Mississippi Poultry Association
 Mon Ami Spa
 Julep
 Moore & Moore Sweets
 Mosaic Interiors
 Mum's the Word
 The Mustard Seed, Inc.
 Mutual Credit Union
 The Nail Bar
 Nance & Co. Hair-Skin-Body
 New South Restaurant Group
 Nifty Nails
 NPHC Ambassadors
 Jake and Caroline Nurkin
 Old Capitol Inn
 Olde Towne Cleaners
 Olvie Branch Christian Church
 Omega Psi Phi Fraternity Inc
 Outback Steakhouse
 Outta Control Whipz
 Sommyr Paden
 Painting With A Twist
 Pajama Program Headquarters & Reading Center

Palm Beach Tan
 Paper Place;The
 Parlor Market
 Parlor Salon
 Carrie Partridge
 James Patterson
 Persnickety, Inc.
 Petal High School Family & Consumer Services
 Jaclyn Petty
 Pig and Pint
 Pink Bombshell
 Pink Possum
 Pittman, Germany, Roberts & Welsh
 Pizza Inn of Madison
 Planet for Kids
 Popfizz Children's Boutique
 Primo's Cafe
 Pure Barre
 Qdoba
 Ray's Bed Bath Window
 Lynda Richards
 The Rogue
 The Runnels Center
 Sacred Heart Catholic Church
 Sake Cafe
 Salon 11
 Salon West
 Salvation Army
 Sea Glass Fine Art
 Second Chance Creations
 Sephora
 Shadow Ridgle Golf Club
 Shapley's
 Renee Shelnut
 Shoney's
 The Shop Around the Corner
 Signs First
 'Sip Magazine
 Soulshine Pizza
 Southbound Bagel & Coffee Shop
 Southern Beverage
 Southern Miss Women's Basketball
 Southern Prohibition
 Southern Surgery and Urology
 Southside Rydaz Bike Club

Chris Spear
 Sheila Staten
 Stejn Jewelry
 Stella and Company
 Stitche
 Sugar Magnolia Takery
 Sugar Magnolias Gifts & Boutique
 Summer House
 Bob Suttthin
 Sweet Dreams
 Table 100
 Therapeutic Solutions
 The Thirsty Hippo
 Amisha Thomas
 Tinnin Imports
 Trinity Baptist Church
 United Apparel Liquidators
 The Venue
 Vicki's on Walnut
 Vicksburg Cotillion Club
 Vicksburg Quilters
 View Gallery
 Walker's Drive In
 Wal-Mart
 Walnut Square Pharmacy and Old Towne Gifts
 Tene Wansley
 Wayne Weidie
 Whipz By Studz
 Ranzy and Margaret Whiticker
 Whole Foods Market
 Natalie Wiggins
 Heather Wilkins
 William Wallace Salon
 Natasha Williams
 Michael and Stacy Williams
 Wolfe Studios & Fine Art
 Wreaths for All Occasions
 Shelby Wren
 YMCA
 Jennifer Young
 Zimmerman's International Wine Imports, Inc.



A Daisy A Day
 The Depot Coffee House & Bistro
 DiamondJacks
 Downtown Tonsorial Parlor
 Michael and Summer Duncan
 The Early Settler
 Elisha's Joy
 Epley Depot
 Zachary and Sarah Erwin
 Randy and Kathy Eure
 Eve Marie's Boutique
 Everyday Gardner
 Face and Skin Center
 Porshia Ferguson
 Joel and Camille Ferriss
 Fine Eyes Eyeware
 Fine Wine & Liquor Loft
 Five Guys

GLO Design Studio
 Goodwin Imaging
 Kelly Gordon
 Teena Grantham
 Great Scott
 Neva Greenwald
 Rick Griffin
 Dustin and Traci Grubb
 Suzanne Guild
 Half Shell
 Marshall L. Harris
 Rick Hartzog
 Hattiesburg American
 Hattiesburg Clinic Dermatology South
 Hattiesburg Coca - Cola Bottling
 Hattiesburg Country Club
 Hattiesburg Impact
 Hattiesburgers In Paradise



1465 Lakeland Drive
Jackson, MS 39216
P. O. Box 1078
Jackson, MS 39215

Local: 601.352.7784
Toll Free: 800.388.6247
Fax: 601.968.0021
www.mchscares.org

Follow MCHS on:

