



## 2014 ANNUAL OUTCOMES & REPORT

800.388.6247  
[www.mchscare.org](http://www.mchscare.org)





**John Damon, Ph.D.**  
Chief Executive Officer

***“The best way to predict the future is to create it.” - Peter Drucker***

Over the past two years, I have had the distinct honor to serve as the President of the National Association for Children’s Behavioral Health in Washington, DC. This has given me a unique, bird’s eye view of the field and the leadership role our state and MCHS have played in shaping and leading the national discussion. An important take-away I have had from this experience has been that today’s rapidly changing healthcare environment requires three distinct, yet complimentary, mindsets.

**1. “What” we do is going to change.**

Meeting the dire needs of Mississippi’s children requires innovation, leadership, and timely solutions. Children and families face unprecedented challenges in accessing behavioral healthcare services that are timely, coordinated, affordable, and delivered by highly skilled, passionate healthcare professionals. We must respond to the changing needs of our children, families, and staff. Successful service providers must excel in many domains. They must provide excellent care reflective of best practices and be responsive to the voices of multiple stakeholders, including youth, families and funders. They must be visionary, progressive, and accountable. They must value and invest in their employees and set a bar for excellence in all they do. They must be a prominent player in the external environment and be a credible voice in public policy forum. They must remain adaptable to changing requirements, demonstrate program effectiveness and compliance, and demand good information systems. MCHS has set strategic markers to insure it meets and exceeds these requirements.

This year, we have forged strategic new partnerships, taken leadership roles on emerging needs in the state, contributed to the scientific body of knowledge, strengthened our trauma informed care, initiated innovative supervisory training, engaged in emerging and proven evidence-based practices, reorganized to support best practices delivery and growth, diversified our funding base, and competently responded to emerging corporate

compliance best practices. In short, we have remained responsive to the ever-changing healthcare environment.

**2. “Why” we do what we do will not change**

While a constant state of change remains all around us, some things stay absolute - our mission and our values. While innovative problem solving allows us to quickly meet the needs of our staff and those we serve, our mission and values serve as our unchanging foundation. At every opportunity, we look to find ways to uphold, reinforce, and instill four unchanging values: (1) the **voice** of our children and families always come first; (2) **relationships** matter; (3) we take great **joy** in service to others; and, (4) our families and our communities deserve our **very best**. These are not just words on the back of our name badges; they are unchanging commitments to those we serve.

**3. “How” we do what we do will determine our success**

“What” we do will continue to change, “why” we do what we do will not, and “how” we go about our work will determine our success. You cannot succeed without executing business “smarts” such as strategic planning, information technology, public relations, best practice models, etc. However, as best-selling business author, Patrick Lencioni says, *“being smart is only half of the equation in a successful organization.”* We have found that organizational “health” (minimal politics, minimal confusion, high morale, and high productivity) is the multiplier of organizational “smarts.” This year, we have moved with great discipline to: (1) build cohesive teams; (2) create clarity in the organization; (3) reinforce clarity; and, (4) over communicate clarity. We believe that these four strategies will create a healthy organization that promotes transformation for our children and families and creates the kind of work environment our employees look forward to serving in daily.

We may not be able to predict the future of healthcare, but we are hard at work to create one in which children thrive and families overcome extraordinary challenges!

# 2014

- Year at a Glance -



## CLIENTS SERVED 24-HOUR RESIDENTIAL CARE

CARES Center - Jackson	210
South Mississippi Children's Center (SMCC)	130
Transitional Living and Learning Center (TLC)	40
Warren County Children's Shelter (WCCS)	113

## AUTISM SERVICES

The Autism Clinic	17
Autism Consultation Services	426
Mississippi Autism Pilot	26

## EDUCATIONAL SERVICES

CARES School - Gulfport	37
CARES School - Hattiesburg	49
CARES School - Jackson	53

**8,527** Children: 2,776  
Family Members: 5,751  
*INDIVIDUALS SERVED*

## INTENSIVE IN-HOME SERVICES

Mississippi Youth Programs around the Clock (MYPAC)	588
---	-----

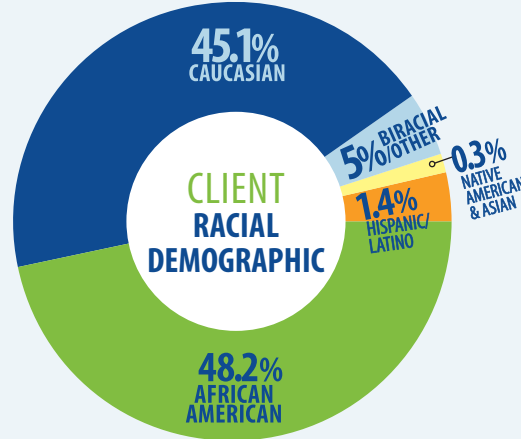
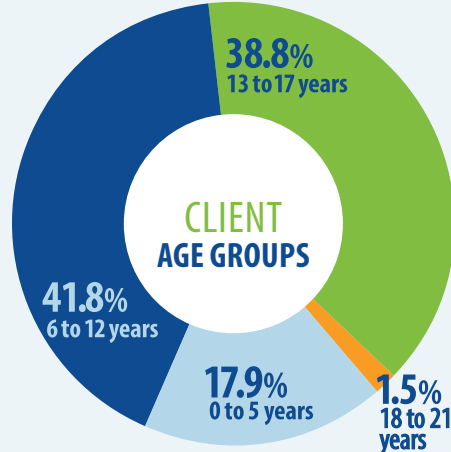
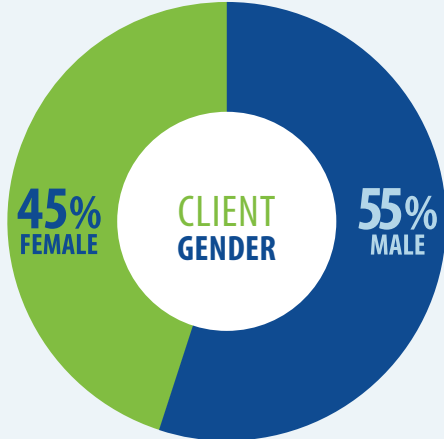
## OUTPATIENT BEHAVIORAL HEALTH SERVICES

Behavioral Health Outpatient Clinic	86
-------------------------------------	----

## PERMANENCY SERVICES

Adoption/Maternity Services (Children Placed)	2
Adoption/Maternity Services (CFSSP)	45
Comprehensive Family Support Services Program (CFSSP)	1,261
Therapeutic Foster Care (TFC)	25

**Additional served through Outreach** 8,048



*89% of kids served in CFFSP were reunified with their families.*



*94% of kids served in CFFSP were diverted from state custody.*





**Sherribeth Wright Farmer**  
President (2013-2015)  
Board of Directors

On behalf of the staff and Board of Directors of Mississippi Children's Home Services, we are proud to offer this information about our work over this last year. Many technical terms are used in behavioral health. I think it is critical is to understand what really matters are the children and families who are transformed by our care. Each of these numbers represents a child or family hurting and desperately searching and hoping for help. Every single "outcome" represented here is a special life created with a purpose that is good and noble. We make a real difference in each and every one of these lives. We transform desperate to hopeful. We are thankful for the support and partnership of so many, but there is more work to do for children and families in crisis. Please join me in sharing this story and supporting this great work.



*Board President  
Sherribeth Farmer and  
CEO John Damon with  
Mississippi's First Lady,  
Deborah Bryant.*



## Board of Directors

### 2014-2015 Board Officers

- Sherribeth Farmer, **President**
- Alfrado Donelson, **Vice President**
- Lauren Benner, **Secretary**
- Jackie Meck, **Assistant Secretary**
- Barney Daly, **Treasurer**
- Jon-David Johnson, **Assistant Treasurer**

### Board Members

- Robert Abney
- Larry Accardi
- Lisa Bemis
- Lauren Benner
- Carol Biedenbarn
- Richard C. Bradley III
- Charlita Cloman
- Helen Dalehite
- Barney Daly
- Alfrado Donelson
- La'Verne Edney
- Sherribeth Farmer
- Bill Grete
- Kevin Hankins
- Jon-David Johnson

- Laurie McRee
- Valarie Mabry
- Brad Maley
- Jackie Meck, Jr.
- Red Moffat
- David Sanders
- Jack Spradling
- Margo Swain
- Dorian Turner
- Bryman Williams
- Stacey Palmer Williams

### Honorary Members

- Skipper Jernigan, Jr.
- Auburn Lambeth
- Ben Stone

# Mississippi Children's Home Services

**Founded** 1912

**Total MCHS Locations:** 21

**Including:** 12 Community Offices      3 Day School Programs  
2 Residential Facilities      2 Emergency Shelters

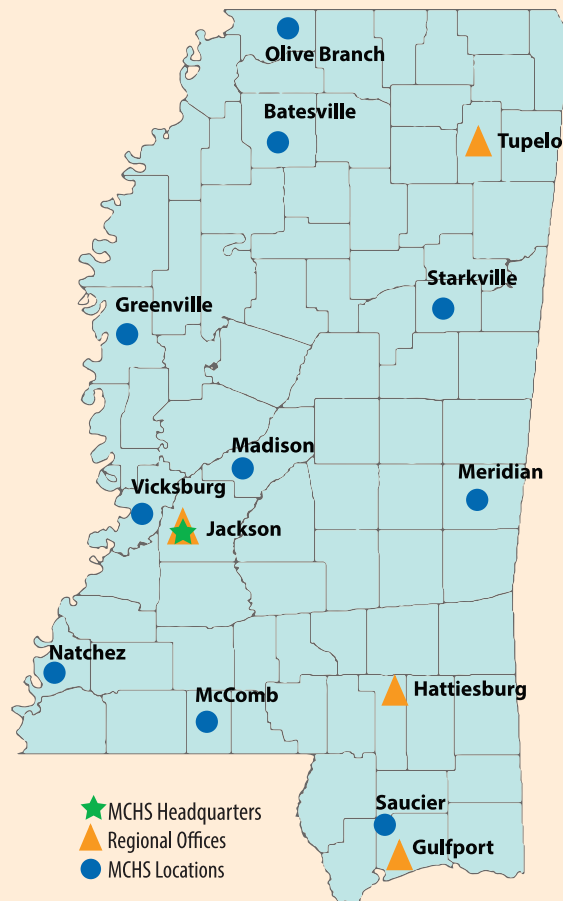
**Total Employees:** 495

## Licensed, Certified, and Accredited by:

- The Joint Commission
- Department of Health and Human Services
- Mississippi Department of Education
- Mississippi Department of Health
- Mississippi Department of Human Services
- Mississippi Department of Mental Health
- Mississippi Division of Medicaid

## Primary Funding Sources include:

- Corporate and Foundation Grants
- County Boards of Supervisors
- Department of Health and Human Services
- Mississippi Department of Education
- Mississippi Department of Human Services
- Mississippi Department of Mental Health
- Mississippi Department of Public Safety
- Mississippi Development Authority
- Mississippi Division of Medicaid
- Municipalities
- Program Service Fees
- Private Donations
- United Way



**100% of WCCS**

*clients had a plan to help to keep them safe after leaving the shelter.*



**100% of CARES**

*Center's client's families would seek help from CARES Center for their child in the future.*



# Statewide Program Guide

Mississippi Children's Home Services provides a continuum of **behavioral health, educational and social services** for children and families.

## AUTISM SERVICES

**The Autism Clinic** (Madison)

**Clinical Services:** The Autism Clinic specializes in providing individualized Applied Behavioral Analysis (ABA) services, an evidence based practice that focuses on behaviors for children on the autism spectrum. They also help families learn how to reinforce these processes at home.

**Early Intervention Services:** The Autism Clinic provides early intervention and ongoing assessment to children ages 18 months to 8 years old with an autism spectrum disorder (ASD). MCHS also provides an early intervention

pilot program through a partnership with the Mississippi Department of Medicaid.

**Consultation Services:** MCHS offers ASD consultation in public and private schools.

**Day School Programs:** Each CARES School provides specialized classrooms for children on the autism spectrum. (Gulfport, Hattiesburg, Jackson)

**South Mississippi Children's Center** - The

South Mississippi Children's Center (SMCC) is a 12-bed coeducational, diagnostic and evaluation shelter. SMCC operates a runaway and homeless youth program, as well as a diagnostic and evaluation shelter program for youth ages 9 to 17.

**Warren County Children's Shelter** - The

Warren County Children's Shelter (WCCS) is a 12-bed coeducational diagnostic and evaluation shelter serving ages birth to 17. The shelter has a runaway and homeless youth program component.

## CRISIS SERVICES

**Child Advocacy Center** (Gulfport) - The Child Advocacy Center offers comprehensive case management to child victims and their families involved in the court system. Case managers refer clients to appropriate community resources including legal, mental, health, and medical. All clients receive support and guidance throughout their involvement in the judicial process. **This project is supported by Child Abuse Prevention Center Fund, a Fund of the Gulf Coast Community Foundation.**

## EDUCATIONAL SERVICES

**CARES School Program** (Gulfport, Hattiesburg, Jackson) - The CARES Day School is an accredited, non-public, special purpose school designed to meet the educational and behavioral needs of students whose behavior prohibits participation in the public school setting. The CARES School provides quality individualized education that meets the needs of each individual student. Each CARES School also offers specialized classrooms and consultations for children on the Autism Spectrum.



*I truly appreciate every therapist that has worked with my child. Each one shows genuine concern for my child.*

*- Autism Program family member*

*The **VOICE** of our children and families always comes first*

## FAMILY PERMANENCY SERVICES

### Adoption and Maternity Services

For more than 100 years, MCHS has been committed to finding forever families for children through our adoption program. Our work with families includes providing home studies, post-placement supervision and emotional support throughout the adoption process. MCHS also provides search and reunion services for adoptees.

### Comprehensive Family Support Services Program

- The Comprehensive Family Support Services Program (CFSSP) is a unique service designed to promote timely family reunification or family preservation for children and youth in crisis. The focus of this program is to keep families together and to reunite children in state custody with their families. CFSSP is a service of the MS Department of Human Services, Division of Family and Children's Services.

**Therapeutic Foster Care** - The Therapeutic Foster Care (TFC) Program provides a therapeutic, caring environment in the context of a nurturing foster family home. Any child entering our care is supported in reaching his or her permanency plan, whether that is reunification with the family, adoption, permanent foster/kinship care, or independent living. Each child is supported by a TFC therapist, and our foster parents receive extensive training to ensure that each child is

given the opportunity to succeed at home, in school, and in the community.

## INTENSIVE IN-HOME SERVICES

**Mississippi Youth Programs Around the Clock** - Mississippi Youth Programs Around the Clock (MYPAC) is a home and community-based program that provides parents with a community-based alternative to psychiatric residential services for youth with serious emotional disturbances. MYPAC is provided in a partnership with MS Department of Medicaid.

## OUTPATIENT SERVICES

### Behavioral Health Outpatient Clinic

The Behavioral Health Outpatient Clinic serves children and youth up to age 21 years old with individual and family therapies. Providing access to evaluations, individual and family therapy, crisis prevention, and psychiatric services, the Clinic has a wide range of outpatient services. MCHS offers flexible scheduling for children and families. We accept most major health insurance plans and Medicaid.

### Therapeutic Day Treatment Program

(Jackson) - The Therapeutic Day Treatment Program is for children who are struggling to maintain appropriate participation in traditional school setting due to behavioral or emotional problems. Diagnoses may include adjustment disorder, ADHD, oppositional defiant disorder, PTSD

and other disruptive behavioral disorders. Treatment is provided in an after-school setting.

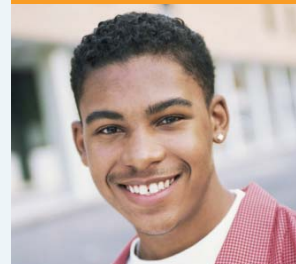
### Therapeutic Preschool Day Treatment Program

(Natchez) - The Therapeutic Preschool Day Treatment Program provides therapeutic treatment for children ages 4 to 5 years old who cannot participate in a traditional preschool/day care due to behavioral or emotional problems. Diagnoses may include reactive attachment disorder, ADHD, oppositional defiant disorder, PTSD and other disruptive behavioral disorders.

## RESIDENTIAL SERVICES

**The CARES Center** (Gulf Coast, Jackson) - The CARES Center is a private, nonprofit psychiatric residential treatment center for children and adolescents with severe emotional and/or behavioral disturbances. Our 60-bed facility, located in Jackson, provides services for ages 6 – 17. Our 20-bed facility on the Gulf Coast provides services for ages 13-17. Comprehensive services include intensive individual, group, and family therapy; medical services; therapeutic recreation and education services; and social skills training. Children residing in the CARES Center attend the CARES School located on-site.

*100% of MCHS's referral sources feel MCHS is known for its integrity and ethical practices.*



*100% of CARES School students' families feel staff is respectful.*





*Santa spreading Christmas joy to our children on our Bagley Campus*

## Helping Us Transform Lives Volunteers, Auxiliary, and Advisory Boards

*By volunteering time and talents to MCHS, you are helping transform the lives of thousands of children in Mississippi. Whether it is reading to our children at Christmas, hosting a monthly birthday party, or serving a special lunch to our kids and staff, each volunteer is exemplifying the core value of **joy in service**.*

*We always welcome volunteers. If you or your organization would like to volunteer with MCHS, please contact 601-352-7784.*



*Junior League of Jackson accepting the 2014 Chrysalis Award with First Lady Deborah Bryant.*

### INDIVIDUALS & ORGANIZATIONS

AmeriCorps  
 Ameristar Casino  
 McKenzie Amis  
 Judy Sudduth-Bain  
 Lindsey Brown  
 First Lady Deborah Bryant  
 Blue Cross & Blue Shield of Mississippi Team Blue  
 Tameka Buck  
 Gerry Clark  
 Flowers by Mary  
 Dwayne Fuller  
 Lisa Fuller  
 Sydney Gardner  
 Germantown High School Student Council  
 Grace Bible College  
 C. E. Grace Photography, LLC  
 Hinds Community College Football Team  
 Holmes Community College Nursing Program  
 Kristi and Vince Herrin  
 Jackson Lions Club

Jackson State University Alumni - Kappa Alpha Psi Fraternity  
 Jackson State University Students  
 Aboye Jinkiri  
 Ronnie Johnston  
 Tommy Keen (Santa-T)  
 Junior League of Jackson  
 Knights of Columbus Council 9543  
 Stefani Leo  
 Venecca Mason, Esq.  
 Milsaps College Students, Faith and Works  
 Ed Marsalis  
 Melanie McEwen  
 Millsaps College - Volleyball Team  
 Mississippi College Physician Assistant Program Students  
 Mississippi State Treasurer  
 NDJ Entertainment, Inc.  
 Ken North  
 Oakdale Baptist Church  
 Pampered Princess  
 Parent & Kids Magazine  
 Jill Pierce



*Members of our Jackson Auxiliary*

Protel, Inc.  
 Puckett Serves  
 Alana Riptoe, Reach for Kids  
 Mike Robertson  
 Rotary Club of Jackson  
 Angie Smith  
 Jared Tomlinson  
 University of MS Medical Center - School of Dental Hygiene  
 Tunney Vandevender  
 Shannon Warnock  
 Antwan and Dwiki Wilson  
 Amanda Woodruff





## CHILD ADVOCACY CENTER

### BOARD

Jim Allen  
Scott Allen  
John Blake  
Jerry Bracey  
Mary Bui  
Derek Cusic  
Paula Lee  
Rebecca Payne  
Richard Strebeck  
Cindy Webb

## JACKSON AUXILIARY

### OFFICERS

Sonja Barnes, *President*  
Katie Sanders, *Secretary*

### MEMBERS

Kathy Accardi  
Chelye Amis  
Lauren Benner  
Missy Black  
Lana Boyll  
Tracy Burleigh  
Danielle Correro  
Anne Daly  
Sheryl Escude'  
Kathy Eure  
Haley Fowler  
Yotunga Grant

Neva Greenwald  
Victoria Johnson  
Angela Jones  
Abbie Koonce  
Stephanie Leo  
Kristin Malouf  
Donna McCarthy  
Yolanda McElroy  
Lawana McLennan  
Carly McRee  
Victoria Montgomery  
Gina Mulholland  
Amanda Puckett  
Lisa Purdie  
Marci Robertson  
Dana Robertson  
Sharolyn Smith  
Vikki Taylor  
Adrien Travis  
Paulette Ware



## SOUTH MISSISSIPPI CHILDREN'S CENTER

### ADVISORY BOARD

Heidi Hackbarth, *President*  
Althea Jerome, *Recording Secretary*

### MEMBERS

Sam Buchanan  
Leigh Baugh  
Tanjanaya Clark  
Sarah Erwin  
Deborah Franzen  
Kim Fountain  
Vanessa McLellan  
Jeanie Munn  
Lloyd Munn  
Julie Perrigin

## WARREN COUNTY CHILDREN'S SHELTER

### ADVISORY BOARD

Sue Bagby  
William Banks  
Easy Biedenarn  
Lane Campbell  
Anne Cole  
John Ferguson  
Skipper Guizerix  
Jeanine Hanks  
Rachel Hardy  
Annie Jenkins  
Elijah Johnson  
Gil Martin  
Michael Mayfield  
Tami Milazzo  
Bill Nichols  
Marie Thompson



*AmeriCorps volunteers make repairs and paint at WCCS.*



*Ms. Ruth Lester, a foster grandparent volunteer at SMCC*

*The Blue Cross & Blue Shield of Mississippi Team Blue helped our kids learn how to have fun and be active.*



**93% of MCHS expenses go towards the programs that transform children's lives - Mississippi Secretary of State**

## Mississippi Children's Home Services and Affiliates Consolidated Statement of Activities\*

Year ended December 31, 2014

### Unrestricted net assets

#### Support and Revenue

Government Agencies	\$26,193,033
Contributions - United Way	380,740
Program fees	963,178
Contributions - Other and Special Events	841,537
Interest and Dividends	35,804
Rental Income	125,959
Net Assets released from restrictions	766,525
Other	263,548

**TOTAL SUPPORT AND REVENUE \$29,570,324**

\*Excerpt from Audit

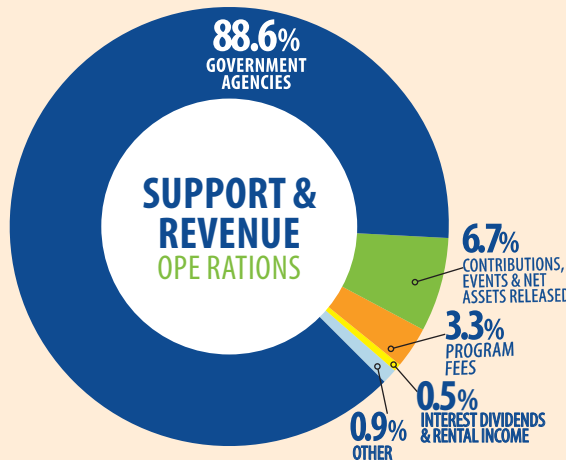
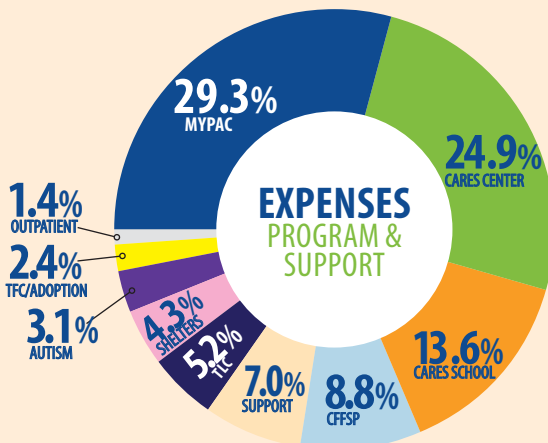
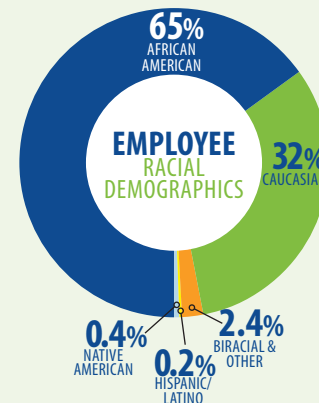
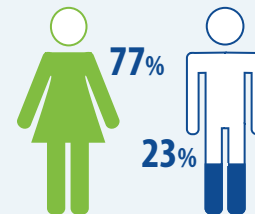
#### Expenses

Salaries	\$17,450,872
Payroll Taxes & Benefits	3,547,722
Professional Fees	2,150,799
Program Supplies	970,038
Other Operating	502,023
Travel and auto expense	1,207,914
Occupancy	1,625,486
Rental & Maintenance	101,674
Insurance	278,141
Bad Debt Expense	342,513
Depreciation	1,184,803

**TOTAL EXPENSES \$29,361,985**

Increase in unrestricted net assets 208,339

**495** Employees work at MCHS



**\$30.6M** economic impact to Mississippi

\$21M - salaries/taxes  
 \$1.6M - property rent/taxes  
 \$8M - vendor payments

**RELATIONSHIPS** matter

## Our Community of Support

*Thank you to the following individuals, corporations and foundations for the support to transform children's lives!*

### 1912 Society

(Planned or Deferred Gifts)

Carol A. Biedenbarn  
Mr. and Mrs. George Gunn  
JEBCA  
Mrs. John Keeton  
Jack Spradling

### Children's Champion

(\$100,000 or more)

William Cannady III  
Gertrude C. Ford Foundation

### RV Powers Society

(\$25,000 - \$99,999)

Faith Hill & Tim McGraw, Neighbor's Keepers Advised Fund of the Community Foundation of Middle Tennessee

Madison Charitable Foundation  
The H. F. McCarty, Jr. Family Foundation  
Selby & Richard McRae Foundation  
Wal-Mart Foundation

### Thomas Gale Society

(\$10,000 - \$24,999)

Bob and Kay Abney  
J. W. Bagley Foundation  
BankPlus  
Carol A. Biedenbarn  
Entergy Charitable Foundation  
Feild Co-Operative Association, INC.  
Laurie H. McRee  
Keeton Family Foundation  
Rite Aid Foundation Kid Cents  
Wellington Associates, Inc

### Benefactors Circle

(\$5,000 - \$9,999)

Larry and Kathy Accardi  
The Better Life Foundation, Inc.  
C Spire Wireless  
John and Leslie Dane  
The Fountain Family Foundation  
Hattiesburg Area Association of Realtors  
Hattiesburgers In Paradise  
Nissan North America, Inc.  
Margaret E. Swain  
Dorian E. Turner  
Trustmark National Bank - Jackson

### Chrysalis Circle

(\$2,500 - \$4,999)

BancorpSouth  
Crossway Church  
Herman and Shelia Crowder  
John and Helaina Damon  
Graeber Foundation  
Joan Marie Kaye  
Bryan Nelson P.A.  
Paul and Jill Pierce  
Puckett Machinery  
Stuart C. Irby Company  
Tarver Foundation

### Patrons Circle (\$1,000-\$2,499)

Mark and Tammy Amis  
Adams and Reese, LLP  
American Equity Investment Life Ins. Co  
Ameristar Casino Vicksburg, Inc.  
Ormand Austin  
Cathie J. Bailey  
Guy and Lana Boyll

A. P. and Lisa Busby  
Canizaro Cawthon Davis  
Architecture Planning Interior Design  
Carr, Riggs & Ingram, LLC  
ChemFirst Inc.  
Helen L. Dalehite  
Alfrado and Shirley Donelson  
Larry W. and Pamela B. Edwards  
Charitable Fund  
Randy and Kathy Eure  
Elmer & Gladys Ferguson Charitable Trust  
Forrest General Hospital  
Lisa Fuller  
Golding Barge Line, Inc.  
Terry and Stacey Hight  
James E. Fowler Family Foundation  
Margaret Keeton  
Lady Luck Casino  
Loyal Order of Moose 1581  
Jon and Valarie Mabry  
Tim and Cynthia Mahaffey  
Fred and Barbara McDonnell  
Paul McNeill  
Jackie and Shani Meck  
MS Association of Women Dentists  
Red and Helen Moffat  
Mutual Credit Union  
Porter & Malouf, Law Firm  
Regions  
Resource Development, LLC  
Arthur and Carole Ring  
Ross & Yerger Insurance, Inc.

*This list reflects gifts made between January 1 and December 31, 2014. Every effort has been made to ensure accuracy.*

Sonya P. Sanderson  
Robert D. Sanders Foundation  
Jim and Debbie Sones  
Southern Healthcare Agency, Inc.  
St. Dominic Health Services, Inc.  
Wayne and Angie Sumrall  
Dean and Stephanie Tanner  
The Wesley A Caldwell Foundation  
James Thomas  
Thompson and Associates, LLC  
Bill and Nina Tomlinson  
UMMC Medical Student Family Alliance  
United Way of Metropolitan Nashville  
Van Devender Family Foundation  
D. J. and Heather Wagner  
Christopher L. and Allison Westervelt  
Westminster Presbyterian Church  
Winans Trust  
Wise Carter Child & Caraway  
Sam E. and Burnice C. Wittel Foundation  
WME Applied Systems, LLC

### Stewards (\$500-\$999)

David and Arin Adkins  
Advanced Collision  
James P. and Suzanne Almas  
Anonymous  
AT&T United Way Employee Giving Campaign  
Centene Management Company LLC  
Children's Charitable Services  
CoatTails  
Community Trust Bank  
Anne C. Cole  
Barney and Patti Daly  
Stephanie Daniel's Sunday School Class  
Thomas and Margaret Dews  
Elk's Lodge No. 95 BPOE  
Craig and Sherri Beth Farmer  
G & H Medical LLC  
Good Hope Baptist Church  
Neva Greenwald



*100% of the Autism Clinic families have been taught ways to help their child.*



*100% of Autism Clinic families feel comfortable discussing their child's treatment with staff.*



*I like how my concerns are listened to and addressed in each session. - A parent of a Behavioral Health Clinic client*

Kim W. Hoover  
 Billy and Jacqueline Horne  
 Horne LLP  
 The Insurance Mart, Inc  
 The Ironman Foundation, Inc.  
 JD Johnson Realty & Investment  
 Bettie Ruth Johnson  
 Junior Auxiliary of Hattiesburg  
 Patrick and Kristin Malouf  
 James A. and Tammie McCullough  
 Scott and Vanessa McLellan  
 Jackie D. McMillan

Gwen Winters  
 Debbie Young  
 Younger Foundation  
**Friends (up to \$500)**  
 ABATE of MS Vicksburg Chapter  
 ADA Lauderdale Insurance Agency  
 Amy Adams  
 Nelly Alfrey  
 Allein Bible Class  
 Bret Allen  
 Robert and Angela Allred



Ken Hall and Cherri Barnett  
 Kenny and Jana Barraza  
 Ron and Janet Bathurst  
 Brittany Bell  
 Mike and Lisa Bemis  
 Frank and Lauren Benner  
 Dee Betz  
 Joel and Tracy Bianchi  
 D. C. Black Jr.  
 Wes and Missy Black  
 Blue Cross & Blue Shield of Mississippi Foundation  
 Elaine Bond  
 Michael Booner  
 Michael and Ashley Borne  
 Bovina Grocery  
 Lucretia Bowman  
 Ralph and Judy Boykin  
 Durr and Robin Boyles  
 Michael and Jennifer Bracken  
 Tricia Bradford  
 Rick and Mimi Bradley  
 Ladd and Sheila Bratcher  
 Bravo Italian Restaurant & Bar  
 Breese Law Office PLLC  
 Brenda FBO Power & Telephone Supply Co. Gatlin  
 Arthur and Rebecca B. Bressler  
 Pam Brewer  
 Martha J. Bright  
 Thomas and Lynne Brister  
 William and Betty Britt  
 Broad Street Baking Company  
 Jason T. and Christy Brooks  
 Todd and Debbie Brooks  
 Sam and Tab Buchanan  
 Tondre and Tameka Buck  
 Henry D. Bufkin  
 Mary K. Burge  
 Pam Burgess  
 Bob and Jo Ann Burke

Phillip and Anna J. Burnette, Jr.  
 David A. Bush  
 William and Amy Bush  
 John and Lind Busy  
 Bee MHV Club  
 Robert and Donna Kaye Byrd  
 C.L. Dews & Sons Foundry & Machinery Co. Inc.  
 Benton Cain  
 Calvert-Spradling Engineers, Inc.  
 Cannon Toyota  
 Russell and Carla Carlisle  
 Bert and Jamie Carpenter  
 Santa W. Carpenter  
 Ben and Mary Cason  
 Gregory D. Cawthon  
 Charlie Jones Financial Services  
 Christopher M. and Sue Cherney  
 James and Joan Cheroni  
 Choices, PLLC  
 Christ Episcopal Church  
 R. R. Cirilli, Jr.  
 City of Vicksburg  
 Anita Clark  
 John and Janet Clark  
 Billy Cochran  
 Community Bank  
 A. W. and Frances B. Conerly  
 John and Leah Cook  
 James Corbett  
 Chris and Danielle Corro  
 Paul and Lou Ann Cotton  
 Tommy and Tiffany Couch  
 COV Co Homemaker Volunteers  
 Steven and Peggy Cox  
 Wade and Betsy Creekmore  
 The Cress Group LLC  
 Holt and Sidney Crews  
 Johnny and Theresa Crisler  
 Crossgates Veterinary Clinic  
 Custom Flooring, LLC

The Daily Gift  
 William M. Dalehite, Jr.  
 Shay and Anne Daly  
 Dan's Services  
 Charles M. Dawe  
 Charles and Pat Decker  
 Delta Telephone Company  
 Department of Mental Health  
 DiamondJacks  
 Charles M. and Shelia R. Dick  
 Ann DiFranco  
 DIMCO, Inc.  
 The Doctors Company  
 Billy and Joan Dodd  
 William and Frances Doherty  
 Andrew and Deborah Donahoe  
 Doughboy's Handyman Service  
 Robert Duda  
 Bob and Mary Lynn Dunaway  
 Durst Discount Drugs Inc. Store No. 2  
 Rick and Emily Dye  
 Honey East  
 John and Sherri Eiland  
 David Elkin  
 Kaitlyn Ellis  
 Eduardo Enamorado  
 Zachary and Sarah Erwin  
 Mark and Sheryl Escude'  
 Domenic and Susan H. Esposito  
 Harold and Rachel Evans  
 John D. Fagen  
 Fred and Kay Farrell  
 First Pentecostal Church of Georgetown, Inc.  
 First Presbyterian Church  
 First State Bank  
 The FIRST National Bank  
 Harvey and Nell Fitzpatrick  
 John M. Fitzpatrick  
 Representative Flaggs  
 Ray and Bette J. Flowers

*We take great JOY in service to others*

Richard and Kay McRee  
 Metro Communications, Inc.  
 Charles Mullins  
 Nicholson & Company, PLLC  
 Nix-Tann & Associates  
 Outlets of Mississippi  
 Richard and Sherry Patridge  
 Jeff and Melinda Peoples  
 Kris and Amanda Powell  
 George Ready  
 James and Betty Roy  
 Splendid Destinations Travel  
 St. Martin Baptist Fellowship  
 John and Vikki Taylor  
 Whitehall Trust

AmazonSmile Foundation  
 AmFed Insurance Services, LLC  
 Steve and Chelye Amis  
 Arleen Anderson  
 Matt and Tyler Armstrong  
 Camille Atwood  
 Derrick P. Autmon  
 Automotive Glass Specialist  
 Horace H. and Sandra Baggett  
 Robert Bailes  
 Dolph and Dea Dea Baker  
 Bank of Morton  
 Bryan and Jane Anna Barksdale  
 Cornelius Barnes  
 Marty and Sonja Barnes





Howard Greer  
Guaranty Bank  
& Trust Company  
George and  
Robin Gunn  
Michael and  
Donna Gunter  
Heidi Hackbarth  
Halford  
Insurance  
Agency, INC.

Cliff and Janie Hamilton  
Kenneth Hardman  
Mark and Rachel Hardy  
Clyde and Barbara Hare  
Glenn T. Harper  
Gregg and Sidney Harper  
William Harrell  
Ed and Patsy Harris  
Cherie Hart  
Kenneth and Pat Hartley  
Hawkins United Methodist Church  
Women  
Hayneville Telephone Company, Inc.  
James and Preston Hays  
Robert and Christine Heath  
Helen's Florist  
Helping Hand Family Pharmacy  
Hennessey, Thames & Leavitt  
Insurance Agency, Inc.  
Heritage House Interiors  
Herman and Sharon Herrin  
Mary Herrington  
Gregory and Brianne Herrman  
James Hicks  
John and Anna Hight  
B. W. and Ruth Hill  
John and Marie Hill  
Larry and Annette Hill  
Tommy and Heather Hixon  
Heyward and Loicka Hodges

Lomax Floyd  
James D. Fly  
Danny M. Fontenot  
Hunter L. and Sarah Fordice  
Haley Fowler  
Frances Hathorn Circle  
Frank G. Vollar Attorney At Law PLLC  
Michael and Allison Freeman  
French Awning & Screen Co.  
Beth S. Frizsell  
Larry Frost  
Norma J. Fulcher  
Teresa Funderburke  
Charles and Julie Galloway  
Joey Garner  
Jesse Garrett  
Stuart Gates  
Gregory Giddens  
Bobby and Christine Gill  
Chad and Dawn Gnam  
Sid Gonsoulin  
David and Jordan Goodwin  
D. C. Graham  
Maria Graham  
Yotunga Grant  
James and Tiffany Graves  
Danny and Lisa Gray  
Greater Mississippi Combined  
Federal Campaign  
Homer Greer

Amanda Holder  
Home Bank  
Hometown Medical LLC  
Carol Hood  
Oliver H. Hopkins  
Anita Hossley  
Doug and Cathy Hudgins  
Michelle Hudson  
William and Glenda Huff Sr.  
Dan C. Hughes, Jr.  
Haden and Tish Hughes  
Stanley and Glenda Hughes  
Loretta W. Hulin  
Hubert and Janice Hunter  
International Investments Inc.  
International Paper  
J&R Restaurant Group, INC  
Annie Jackson  
Brian Jackson  
Jerry and Jackie Jackson  
Thomas and Natalie James  
Kenny and Cheryl Jeanes  
Bueford and Loucinda Jenkins  
Raoul and Althea Jerome  
Richard and Kaye Jimenez  
Victoria Johnson  
Charlie and Angela Jones  
Jamie Jones  
Jones & Upchurch, Inc. Real Estate  
Agency  
Marianne Jones  
Junior Auxiliary of Vicksburg  
Brendan Kennelly  
Gerald Keyes  
David and Stacy Kilcoyne  
Mary H. Kilgore  
William and Margaret Kilgore  
The Kitchen Table  
Rosalie Knop  
Christian Koch  
Caleb and Abbie Koonce

Kroger Community Rewards  
Mike and Carol Krupa  
Mark Kubicki  
Vincent and Joanna Kuhn  
Claire Ladnier  
Auburn and Linda Lambeth  
Dewey H. Lane  
Sara Laura  
Jacqueline Lee  
Jerry and Phylliss Lee  
Stefanie C. Leo  
Joseph and Renee Lichtenhan  
Bernard and Eloise Lide  
Steven and Elizabeth Lindsay  
William and Betty Longo  
Glorie N. Lorio  
John and Julie Lott  
Mary L. Lott  
Johnny and Peggy Louis  
Anne Lovelady  
Patricia Lumpkin  
Richard and Amy Lynn  
M N M Enterprises, LLC  
MACC  
Joe and Sherry Magee  
Charles and Hilda E. Magers  
Magnolia Mini Storage, LLC  
Eddie and Rhoda Maloney  
Larry and Luanne Manwaring  
G. G. Martin  
Chris and Lucy Mauldin  
May & Company  
Maynard Landscaping  
McArthur, Thames, Slay & Dews, PLLC  
Debbie McCall  
Jay and Donna McCarthy  
Jessica McCarthy  
Kevin McCormick  
Mark and Sharon McCreery  
Kent McDaniel  
Stephanie N. McGee

Martha McKay  
Roger and Jean McKay  
Peggy McLean  
Devere and Lawana McLennan  
Carroll and Lorie B. McLeod  
Stephen and Sandra McManus  
Neil and Beverly McMillen  
Medley & Brown  
George J. Michael  
Michael Bonner Law Firm  
Midsouth Generator LLC  
Glen and Claudia Millis  
Richard and Sylvia Mills  
Brian and Becky Milner  
MS Federation of Women's Clubs  
Armin J. and Jan Moeller  
Jim and Janet Moffat  
Buddy Montgomery  
Victoria Montgomery  
Morgan Stanley  
Larry and Janiece Morris  
William Mosby  
Wilma E. Mosley-Clopton  
Angela Moudy  
David and Gina Mulholland  
Newell R. Murphy, Jr.  
Ira and Tracy Murray  
Eddie and Kathy Myers  
Sylvia Neal  
Bill and Susan Nichols  
Jerry and Myrna Nickens  
John Nissenbaum  
NKS Gulfport, LLC  
Don and Holley Noblitt  
W. D. and Edwina Norris  
Nora N. Novak  
Bronwyn S. O'Dell  
Optimist Club of Vicksburg  
David M. Ott  
Jacque Pace  
Tom and Gayle Papa

**100% of Behavioral  
Health Clinic  
Families have been  
taught better ways to  
help their child.**



**100% of Behavioral  
Health Clinic Clients  
feel staff treat them  
with respect.**



***MYPAC has really helped our family. - A parent of a MYPAC client***

***Our families and our communities deserve our VERY BEST***

Geraldine Parish  
Jim and Gwenda Patton  
James A. Peden Jr.  
Pelahatchie United Methodist Women's Group  
Danny and Elizabeth Perrett  
Penny Perrett  
Julie Perrigin  
Edith L. Perry  
William Peters  
Philip's Building Supply  
Wiley and Ann Phillely  
J. S. and Velda Phillips  
Pine Belt Federal Credit Union  
Pine Belt Oil Co., Inc.  
Jessica Pittman  
Patrick and Glenda Pittman  
Robert and Patricia Murphy  
Francis and Sandra Polanski  
Poly Pharmaceuticals, Inc.  
Sam and Holly Porter  
Glenda Prescott  
Gloria K. Pressgove  
Gloria Preston  
Buddy Prestridge  
Hastings and Amanda Puckett  
Alan and Lisa Purdie  
Lamar Puryear  
Michael and Ginger Ray  
Redwood Methodist Church  
Rehobeth Methodist Church  
Daniel Renfro  
River Hills Club of Jackson Inc  
River Region Medical Center  
River Hills Bank  
Lera Roark  
Alvin and Susan McLendon  
Simmie Roberts  
Bill and Dana Robertson  
Scott and Marcie Robertson  
Robin Wentworth Organizational Excellence

Rocky Mountain Chocolate Factory  
Douglas and Sandra Rogers  
Martha J. Rogers  
Jack E. Ross  
Elvira Rouse  
William L. Rushing  
Butch and Anne Russum  
Amber K. Rutland  
Ryan Chevrolet  
Stephen and Carolyn Sachs  
Sake Cafe  
Sal & Mookie's  
Chuck and Corinne Sampson  
Katie Sanders  
Gail R. Savage  
Alan and Gloria Senter  
J. P. Shackelford  
Sam Shemper  
Signal Telcom Partners, LLC  
Tommy and Jill Siler  
Anna Simmons  
Simmons Lawn Services  
Doug and Judith Simpson  
Larry and Dianne Singley  
Vicki R. Slater  
Shannon Smith  
Sutter and Sharolyn Smith  
Smithville Telephone Company, Inc.  
SML Real Estate LLC  
Southerland and Southerland, PLLC  
Southern Bone & Joint Specialist, P.A.  
Tom and Elizabeth Speed  
Paul and Maureen Speyerer  
The Sports Center Vicksburg, LLC  
Jack and Judy Spradling  
St. Francis of Assisi Catholic Church  
Mark Standberry  
Geraldine D. Stoll  
Nancy and Ben Stone  
Floyd and Bean Sulser  
Ashley Sumrall

Taggart, Rimes & Graham, PLLC  
Marcia L. Tambellini  
Hoyt and Dawn Tanner  
Thomas W. Tardy III  
John T. Tate  
Richard and Vicki Taylor  
Telecommunications Association of the Southeast  
Carlyton and Danyella Terrell  
Albert and Evelyn Terry  
Therapeutic Solutions  
Herman and Shirley Tillman  
Ancel Hines  
Tammy Torrey  
Donald G. and Charlotte Townsend  
Adrien D. and Adrian V. Travis  
Marcus Treadway, Jr.  
Trustmark National Bank - Vicksburg  
Davey and Sandra Tucker  
Richard Tucker  
Len and Ann Turner  
Karla S. Tye  
United Way of Jackson & George Counties  
United Way of South Mississippi  
United Way of the Capital Area  
Hank Vann  
Verisk Matching Gifts Program  
Vicksburg Convention Center and Vicksburg Auditorium  
Vicksburg Elks Lodge No. 95 "Does"  
Vicksburg Family Dental  
Vicksburg Warren School District  
Stephen E. Wagner  
Joe and Linda Walker  
Tommie and Merlene Walker  
W. E. Walker  
William and Sally Walker  
William and Charlotte Waller, Jr.  
Cynthia B. Warner  
Chris and Rebecca R. Waterer

Roger Wayne and Paula Lee  
Benjamin and Jennifer Weber  
Shirley Weidman  
Terry P. Weill  
Calvin and Cheryl Wells  
Wesley B. Jones Electric Company  
Debbie M. Westbrook  
Wheelless, Shapple, Bailess & Rector Attorneys at Law  
Guy and Allison White  
Beau and Marjorie Whittington  
Quentin and Ginger Whitwell  
George and Brenda Williams  
Michael and Stacy Williams  
Ed and Jessie Williamson  
Donny and Leslie Wilson  
Kenny and Trish Windham  
Michael and Cynthia Winkelmann  
Wirt A. Yerger, Jr. Foundation, Inc.  
Susan Womack  
Women of the Moose, Chapter 2242  
William and Sondra Wooten  
Wynndale Lake Civic Association  
Yazoo River Towing, Inc.  
W. S. Yerger  
Hansell N. and Myra York

### **In-Kind Donors**

4450  
Robert and Kay Abney  
After Five Designs  
Albritton's Jewelry  
All Things Possible Ministries  
Amy Elizabeth Collection  
Amy Head Cosmetics  
Anderson Design Center  
Apple Annie's Gift Shop  
At West End  
Awakening  
b. Fine Art Jewelry  
Babalu Tacos & Tapas  
Horace and Sandra Baggett  
Adolphus and Dea Dea Baker

Jodie Ball  
Batte Bridal Registry  
Baxter Wilson  
Beagle Bagel Cafe'  
Beau Rivage  
Sarah Beaugez  
Frank and Lauren Benner  
Big Canoe Rental Tree Topper Chalet  
Bike Crossing  
Batte Furniture & Interiors  
Ebony Bingham  
Kirstie Black  
Blackledge Face Center  
Blithe & Vine  
Blooms - A Garden Shop  
Blue South Entertainment  
Bookland  
Books A Million  
Lisa Bradley  
Bravo Italian Restaurant & Bar  
Breeze Airbrush Tanning and Day Spa  
Briarwood Mart Package Wine & Spirits  
Gene and Peggy Brown  
Dede Brunson  
Budget Office Furniture  
Buffalo Peak  
Tommy Burnham  
C Spire Wireless  
C.L. Dews & Sons Foundry & Machinery Co. Inc.  
Calistoga Wine & Spirits  
Callaway's Yard & Garden  
Calypto Jo's Hair & Tan  
David Cameron  
Canebrake Country Club  
Carr, Riggs & Ingram, LLC  
CasaBella Interiors & Gifts  
Barbara Cashman  
Cerami's Italian Restaurant  
Chad Mars, LLC  
Chandler's Studio  
Tracy Chaney  
Char Restaurant  
Church of Christ  
Clear Channel  
Client 1st Advisory Group

Jan Cohn  
 Colony Wine Market  
 Columbia Auction Company  
 Conestoga Steakhouse  
 Cookin Up a Storm  
 Kenneth J. Coreno  
 Corkscrew Fine Wine & Spirits  
 Court Street United Methodist  
 COV Co Homemaker Volunteers  
 Cowboy Maloney's  
 Coxwell & Associates, PLLC  
 Creative Bites by Candace  
 Crossroads Film Festival  
 Loye Cunningham  
 Curves

Sarah Flagg  
 Fly Boutique  
 Foam Packaging  
 Fondren Cellars  
 Forman Perry Watkins Krutz & Tardy, LLP  
 Forward Health Solutions  
 Rod and Betty Lynn Freeman  
 Fresh Cut Catering & Floral  
 Fresh Ink  
 Front St. Salon  
 Lance Gammill  
 Germantown Wine & Spirits  
 Beth Geter  
 Girl Scout Troop #3417

Healing Touch Day Spa  
 Heaven's Cakes and Catering  
 Hemline Ridgeland  
 High Cotton  
 Highland Village  
 Heather Hines  
 Denise Hogan  
 Jimmy and Susan House  
 Hub City Spokes  
 Hybrid Plastics  
 Impact of Hattiesburg  
 Imperial Palace Casino Resort Spa  
 India Association of Mississippi  
 Beth Geter  
 International Ballet Competition  
 Island Rays  
 It's Only Natural  
 Meg Ivey  
 Jackson Country Club  
 James Channel Salon & Spa  
 Richard and Kaye Jimenez  
 Alicia Johnson  
 Beth Jones  
 Jo's Diner  
 Juicy Drama  
 Julep  
 Juniker Jewelry Company  
 Kats Wine Cellar

Jimmy D. Lott  
 Adrianna Louie  
 The Lucky Rabbit  
 Luxe Nail Salon  
 Lynn Lamp Art & Decor  
 Madison Cellars  
 Madison Fireplace and Patio  
 Magnolia Market  
 Maison Weiss  
 Patrick and Kristin Malouf  
 Mars Marketing  
 Lindsey Martin  
 Massage Envy Spa  
 Material Girls  
 Debbie McCall  
 McDade's Grocery  
 McKenzie's on Main  
 Scott and Vanessa McLellan  
 Kerk and Elizabeth Mehrlé  
 Mint the Restaurant  
 Mississippi Children's Museum  
 MS Museum of Natural Science  
 Mississippi Music Inc. - Hattiesburg  
 Mississippi Poultry Association  
 Mon Ami Spa  
 Julep  
 Moore & Moore Sweets  
 Mosaic Interiors  
 Mum's the Word  
 The Mustard Seed, Inc.  
 Mutual Credit Union  
 The Nail Bar  
 Nance & Co. Hair-Skin-Body  
 New South Restaurant Group  
 Nifty Nails  
 NPHC Ambassadors  
 Jake and Caroline Nurkin  
 Old Capitol Inn  
 Olde Towne Cleaners  
 Olvie Branch Christian Church  
 Omega Psi Phi Fraternity Inc  
 Outback Steakhouse  
 Outta Control Whipz  
 Sommyr Paden  
 Painting With A Twist  
 Pajama Program Headquarters & Reading Center

Palm Beach Tan  
 Paper Place;The  
 Parlor Market  
 Parlor Salon  
 Carrie Partridge  
 James Patterson  
 Persnickety, Inc.  
 Petal High School Family & Consumer Services  
 Jaclyn Petty  
 Pig and Pint  
 Pink Bombshell  
 Pink Possum  
 Pittman, Germany, Roberts & Welsh  
 Pizza Inn of Madison  
 Planet for Kids  
 Popfizz Children's Boutique  
 Primo's Cafe  
 Pure Barre  
 Qdoba  
 Ray's Bed Bath Window  
 Lynda Richards  
 The Rogue  
 The Runnels Center  
 Sacred Heart Catholic Church  
 Sake Cafe  
 Salon 11  
 Salon West  
 Salvation Army  
 Sea Glass Fine Art  
 Second Chance Creations  
 Sephora  
 Shadow Ridgle Golf Club  
 Shapley's  
 Renee Shelnuttt  
 Shoney's  
 The Shop Around the Corner  
 Signs First  
 'Sip Magazine  
 Soulshine Pizza  
 Southbound Bagel & Coffee Shop  
 Southern Beverage  
 Southern Miss Women's Basketball  
 Southern Prohibition  
 Southern Surgery and Urology  
 Southside Rydaz Bike Club

Chris Spear  
 Sheila Staten  
 Stejn Jewelry  
 Stella and Company  
 Stitchee  
 Sugar Magnolia Takery  
 Sugar Magnolias Gifts & Boutique  
 Summer House  
 Bob Suttthin  
 Sweet Dreams  
 Table 100  
 Therapeutic Solutions  
 The Thirsty Hippo  
 Amisha Thomas  
 Tinnin Imports  
 Trinity Baptist Church  
 United Apparel Liquidators  
 The Venue  
 Vicki's on Walnut  
 Vicksburg Cotillion Club  
 Vicksburg Quilters  
 View Gallery  
 Walker's Drive In  
 Wal-Mart  
 Walnut Square Pharmacy and Old Towne Gifts  
 Tene Wansley  
 Wayne Weidie  
 Whipz By Studz  
 Ranzy and Margaret Whiticker  
 Whole Foods Market  
 Natalie Wiggins  
 Heather Wilkins  
 William Wallace Salon  
 Natasha Williams  
 Michael and Stacy Williams  
 Wolfe Studios & Fine Art  
 Wreaths for All Occasions  
 Shelby Wren  
 YMCA  
 Jennifer Young  
 Zimmerman's International Wine Imports, Inc.



A Daisy A Day  
 The Depot Coffee House & Bistro  
 DiamondJacks  
 Downtown Tonsorial Parlor  
 Michael and Summer Duncan  
 The Early Settler  
 Elisha's Joy  
 Epley Depot  
 Zachary and Sarah Erwin  
 Randy and Kathy Eure  
 Eve Marie's Boutique  
 Everyday Gardner  
 Face and Skin Center  
 Porshia Ferguson  
 Joel and Camille Ferriss  
 Fine Eyes Eyeware  
 Fine Wine & Liquor Loft  
 Five Guys

GLO Design Studio  
 Goodwin Imaging  
 Kelly Gordon  
 Teena Grantham  
 Great Scott  
 Neva Greenwald  
 Rick Griffin  
 Dustin and Traci Grubb  
 Suzanne Guild  
 Half Shell  
 Marshall L. Harris  
 Rick Hartzog  
 Hattiesburg American  
 Hattiesburg Clinic Dermatology South  
 Hattiesburg Coca - Cola Bottling  
 Hattiesburg Country Club  
 Hattiesburg Impact  
 Hattiesburgers In Paradise

Greta Kemp  
 The Kitchen Table  
 Holly J. Klaas  
 Kosmos Salon  
 KPMG LLP  
 Kristo's Greek Dining  
 Krutz Family Cellars, LLC  
 Lady Luck Casino  
 Lakeland Presbyterian Church  
 Lamar Signs  
 Amanda Lamb  
 Lar'Jes  
 Latitudes  
 LB Designs  
 John W. Lee  
 Kathryn Lewis  
 Lincoln Road Package Store  
 Little Tokyo Restaurant



1465 Lakeland Drive  
Jackson, MS 39216  
P. O. Box 1078  
Jackson, MS 39215

Local: 601.352.7784  
Toll Free: 800.388.6247  
Fax: 601.968.0021  
[www.mchscares.org](http://www.mchscares.org)

Follow MCHS on:

